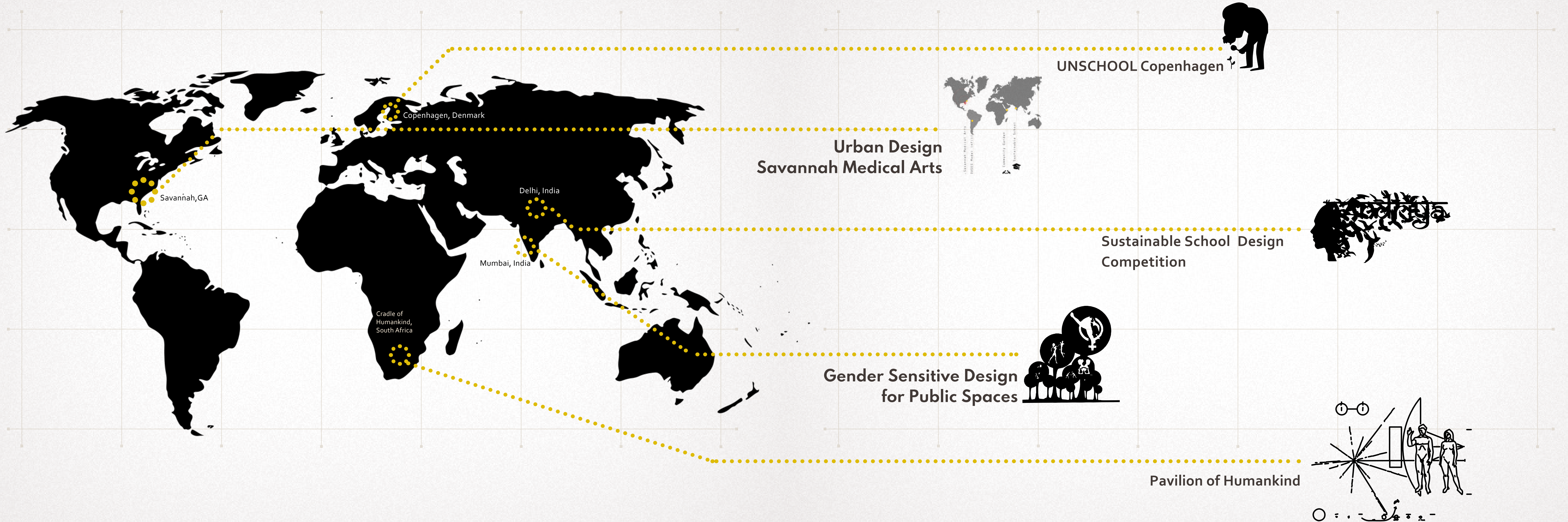


# PORTFOLIO



**JEEVANJYOT KOHLI**





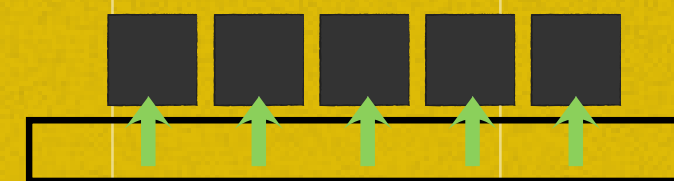


# PROJECT 1

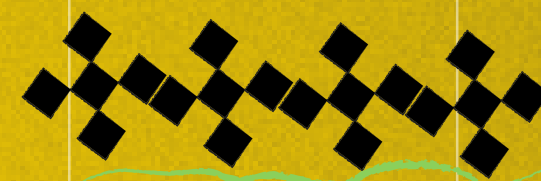
The world is facing a huge learning crisis. Education systems have become so generic and systemic that it doesn't provide personal, innovative and optimized care to its pupils. While countries have significantly increased access to education, being in school isn't the same thing as learning.

Education is at the center of building human capital. Delivered well, education – along with the human capital it generates – benefits individuals and societies. But Pedagogy faces a real test in today's times for it has remained very stagnant and rigid in its discourse. One big reason the learning crisis persists is that many education systems across the developing world have little information on who is learning and who is not.

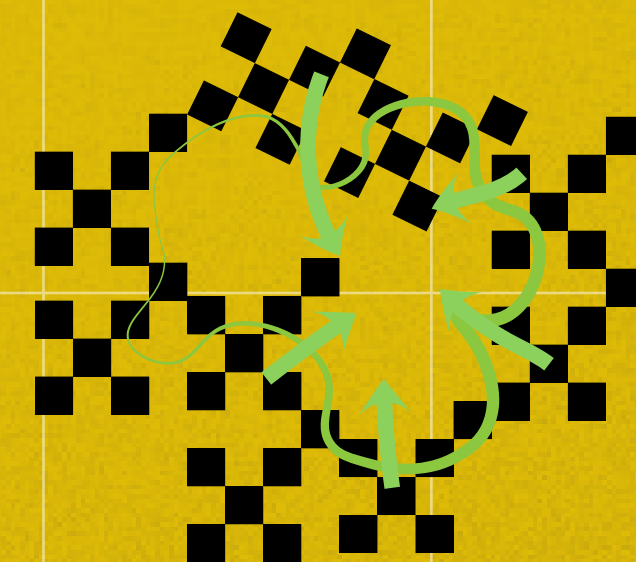
## UNSCHOL COPENHAGEN- WINGS OF DISCOVERY



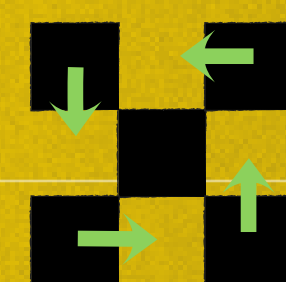
TYPICAL CLASSROOM



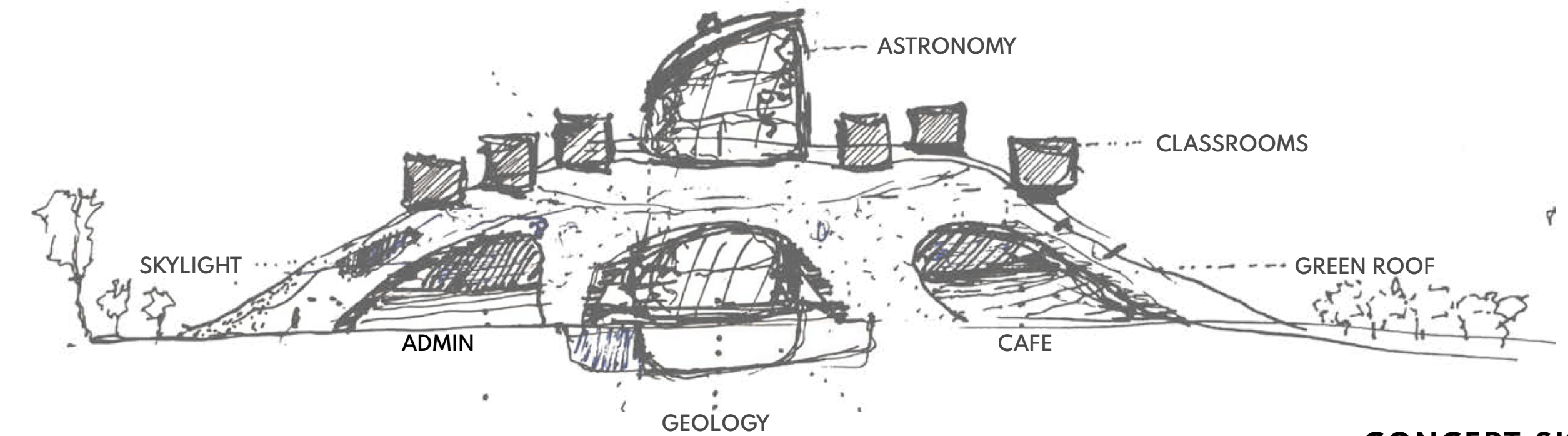
DYNAMIC CLASSROOM



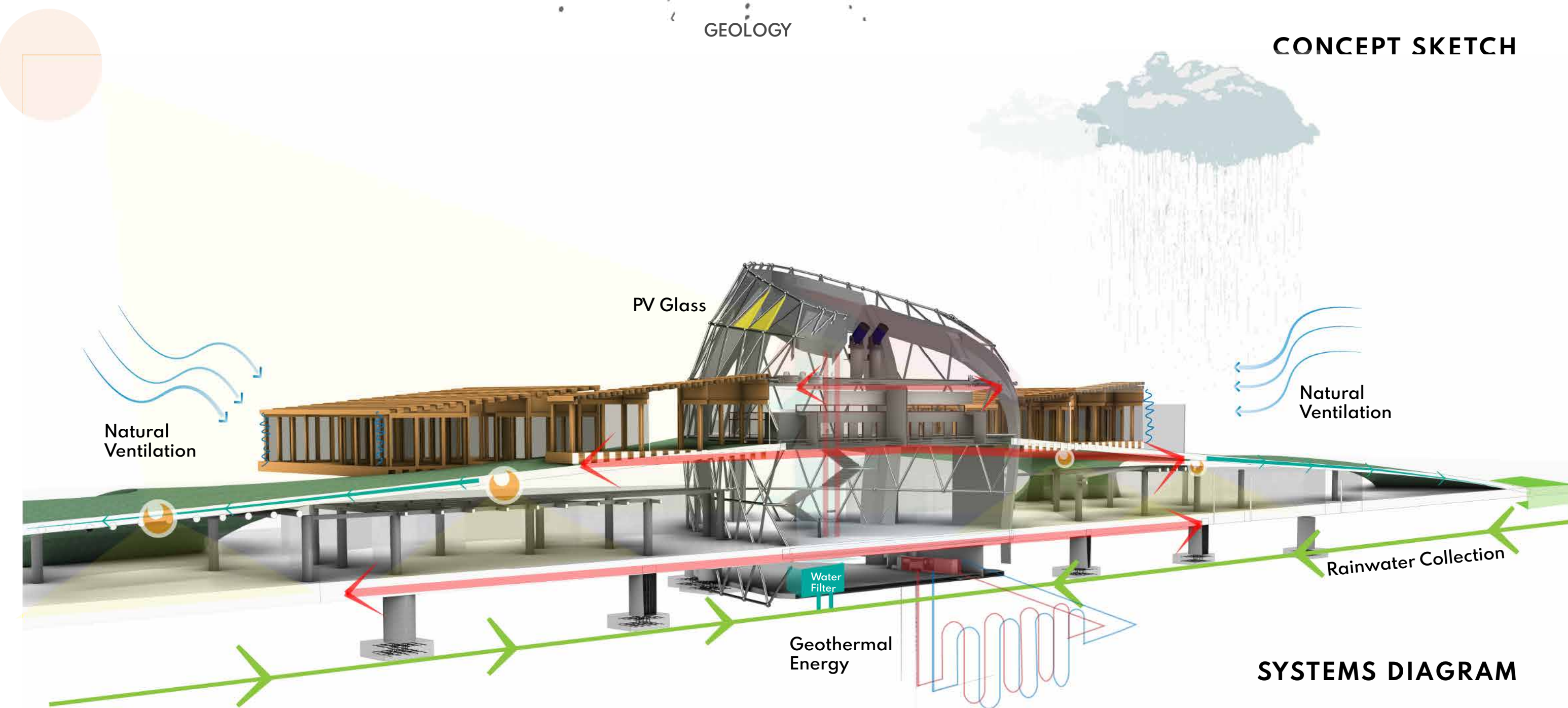
INTER-GENERATIONAL  
COLLABORATION



INTRA-GENERATIONAL  
COLLABORATION



CONCEPT SKETCH



SYSTEMS DIAGRAM





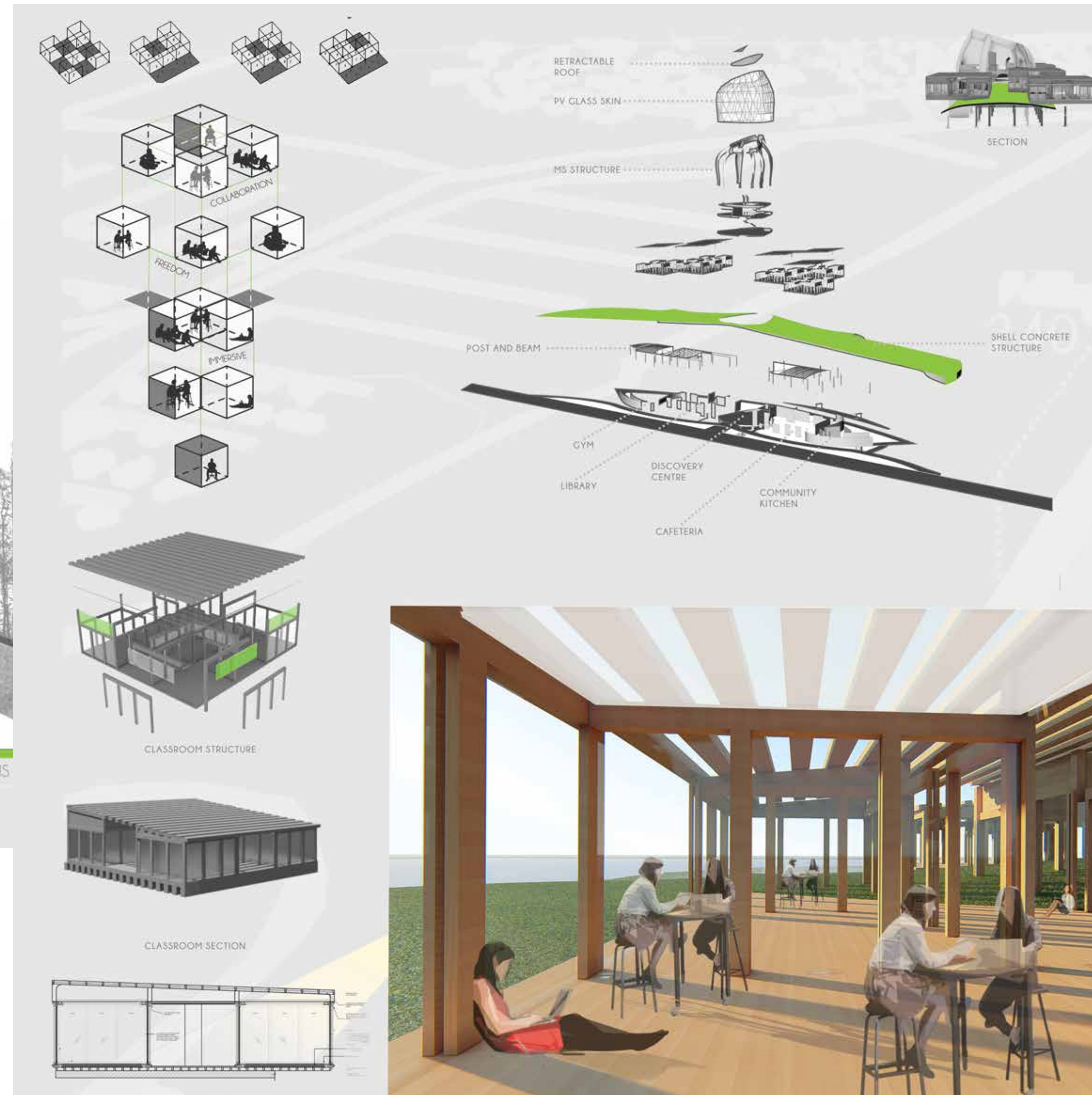
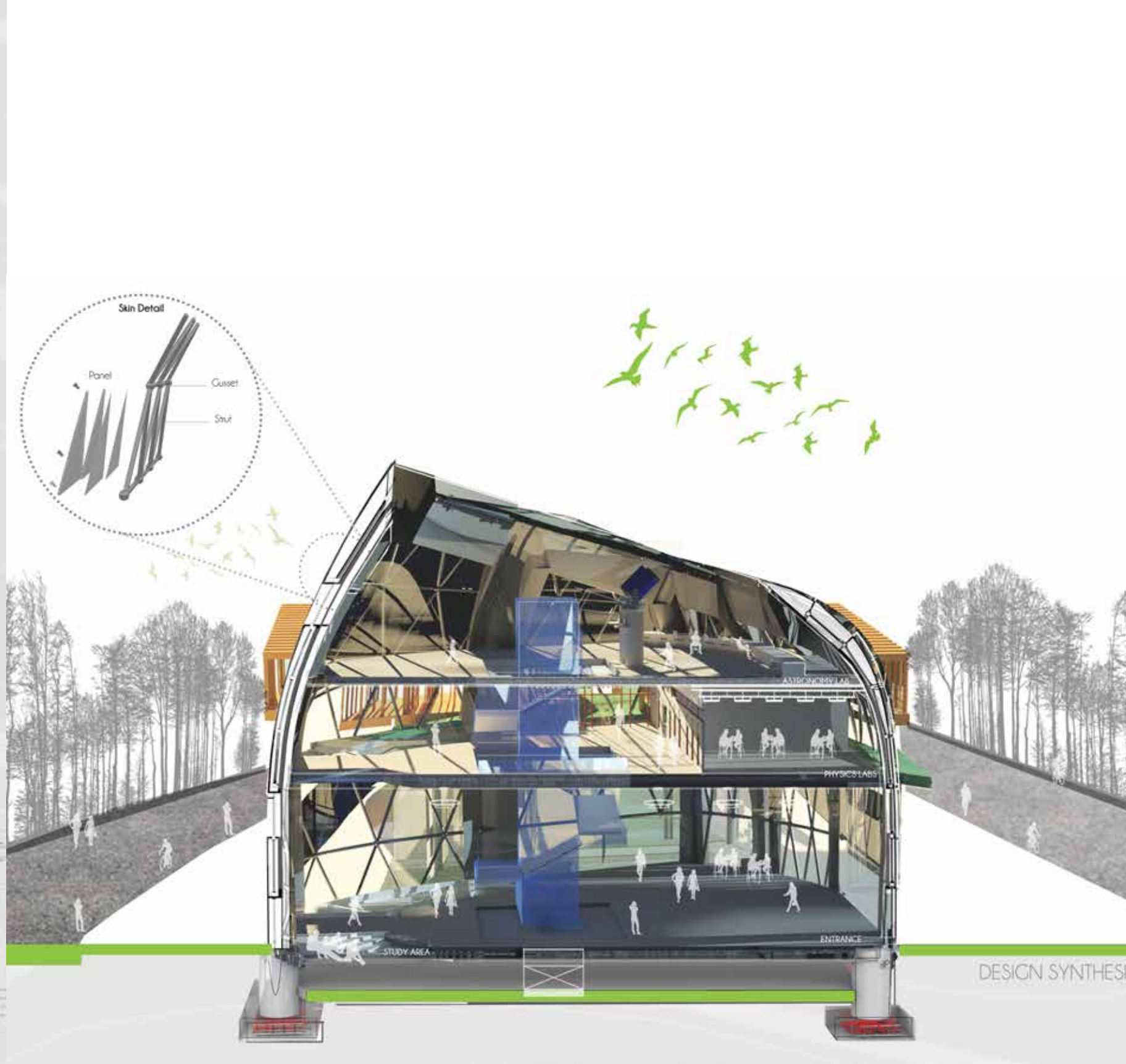
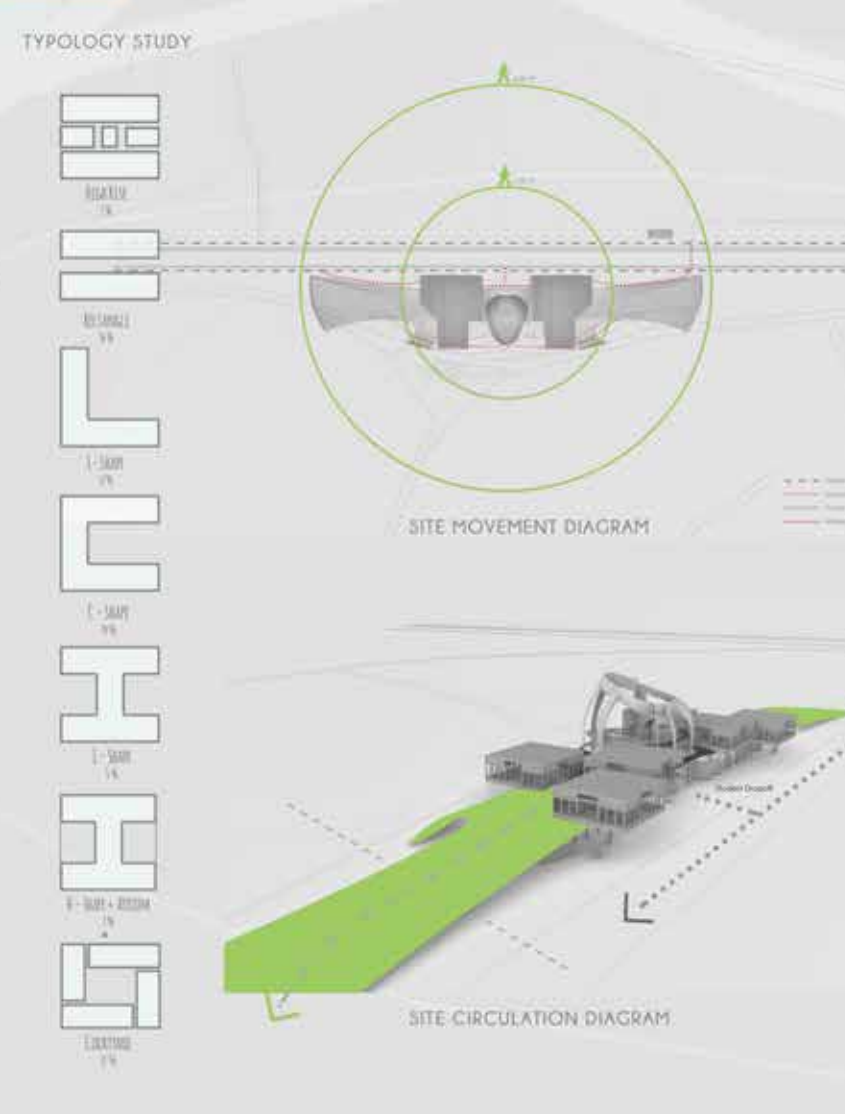
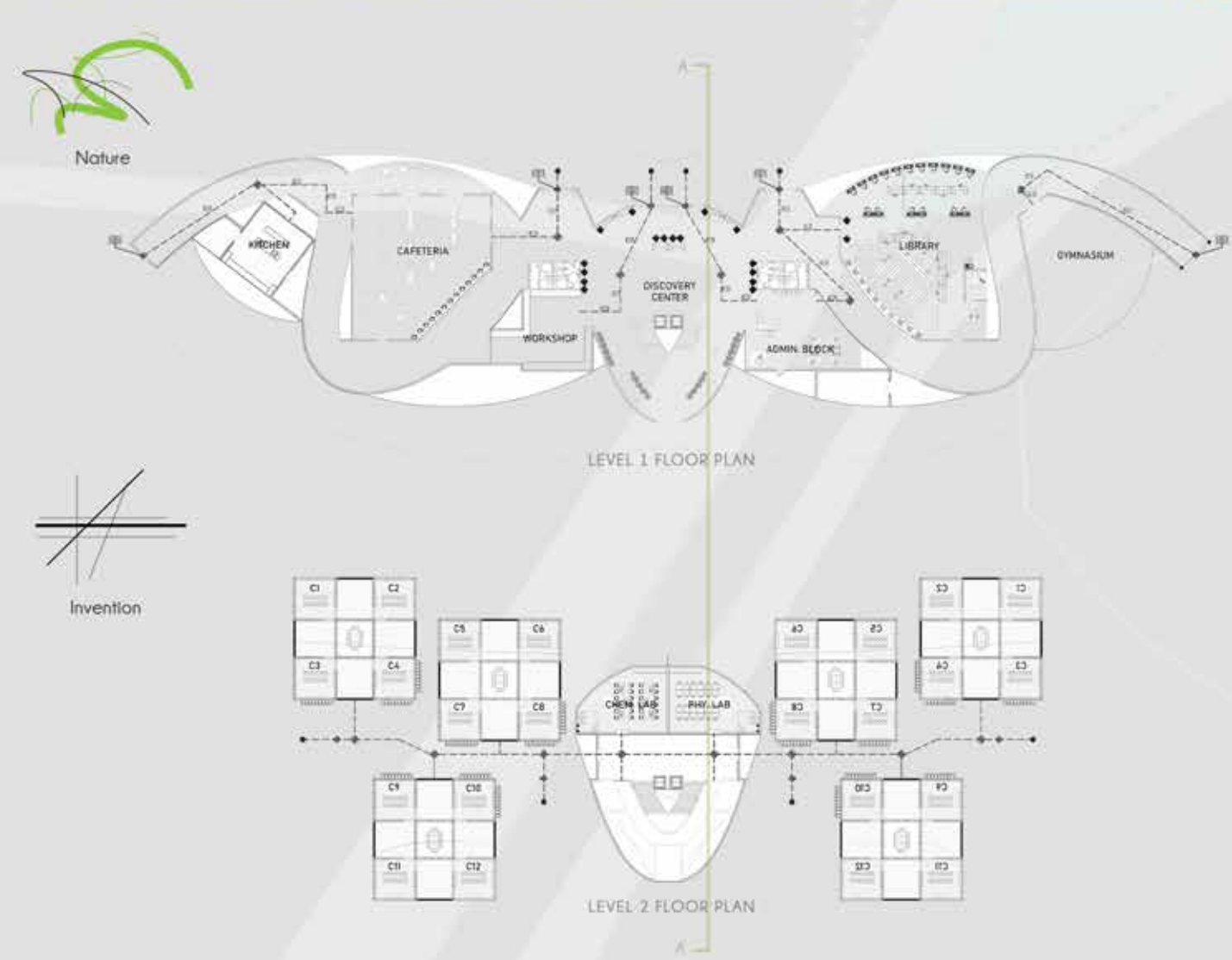
GREEN ROOF



COMMUNITY GARDEN

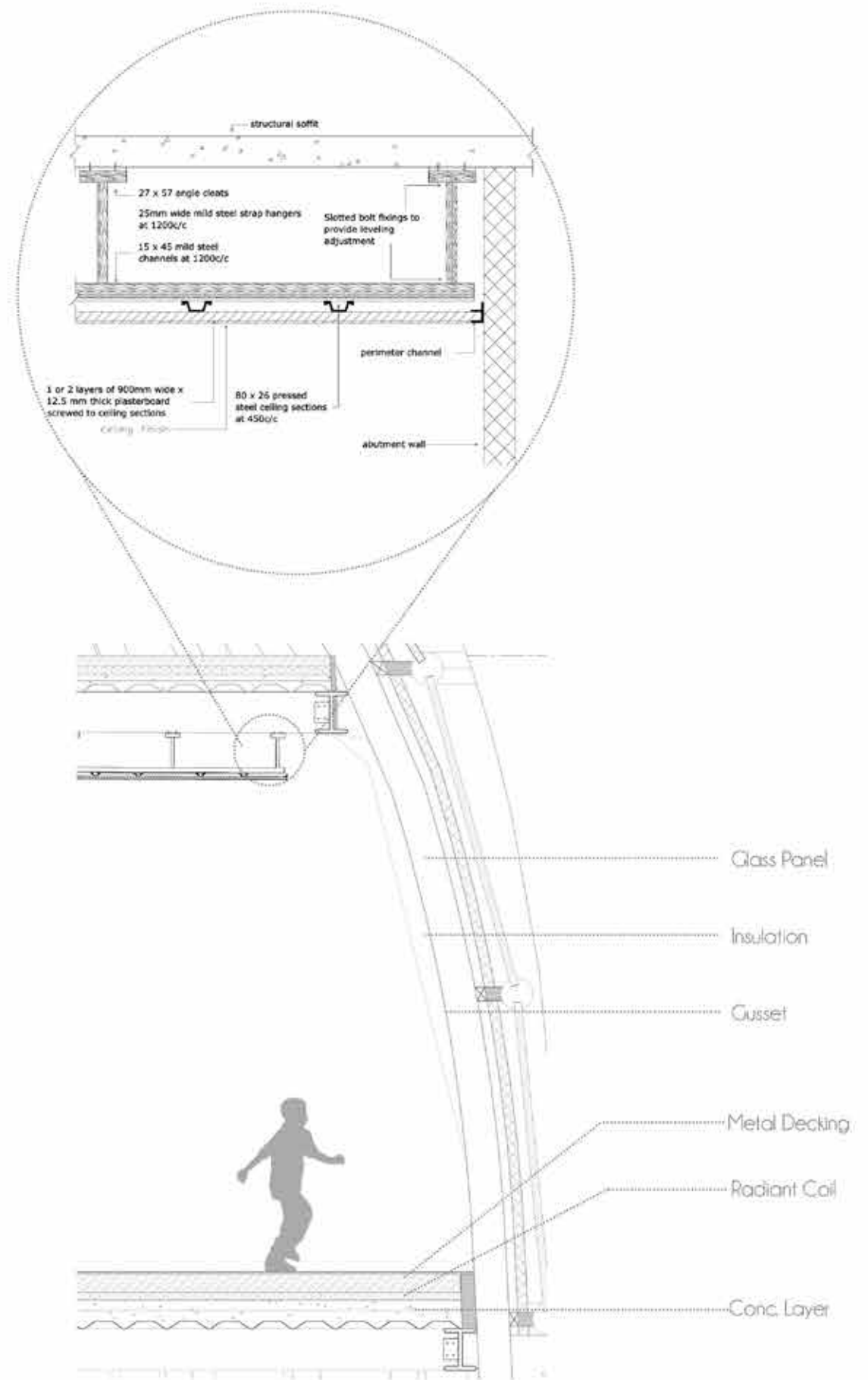
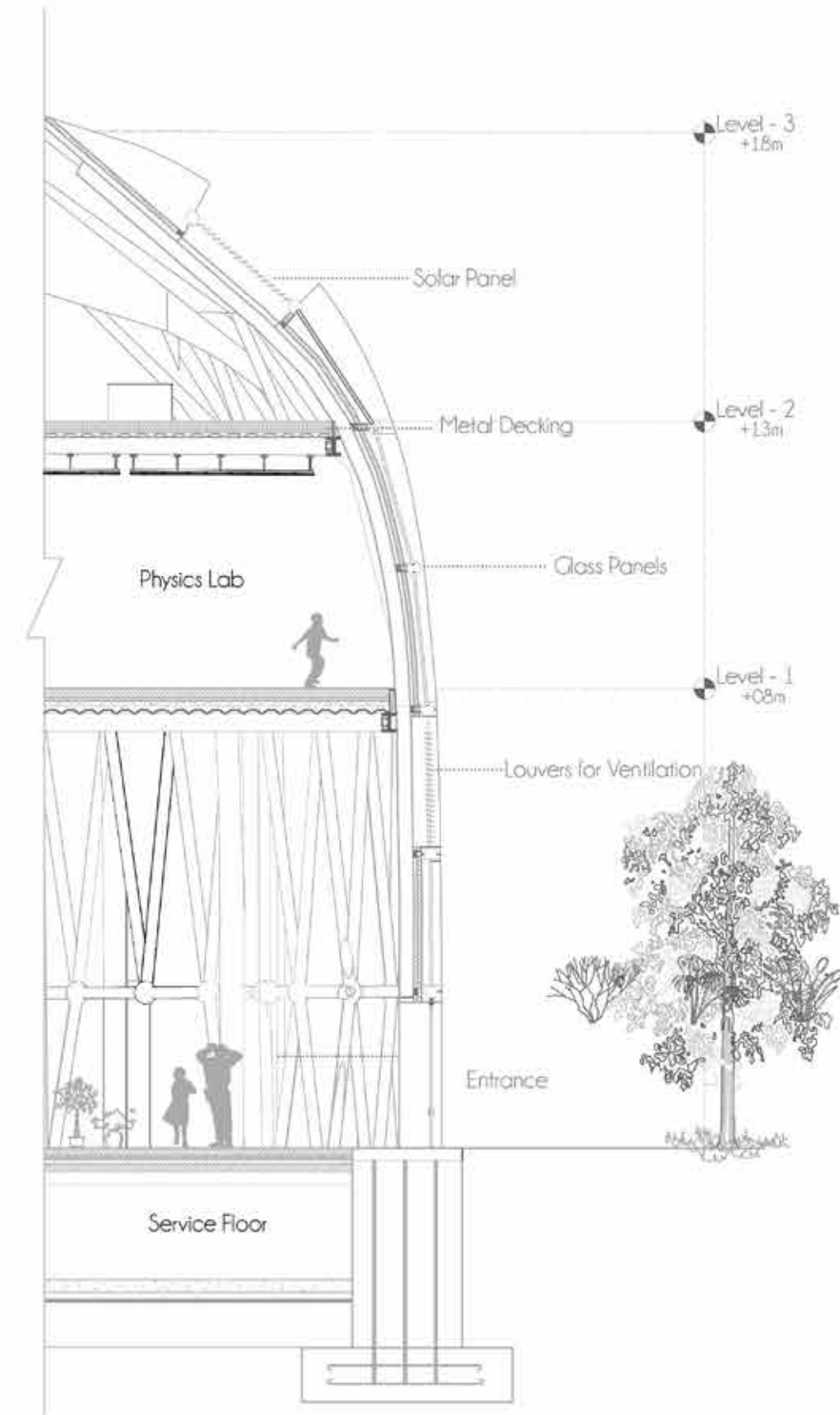
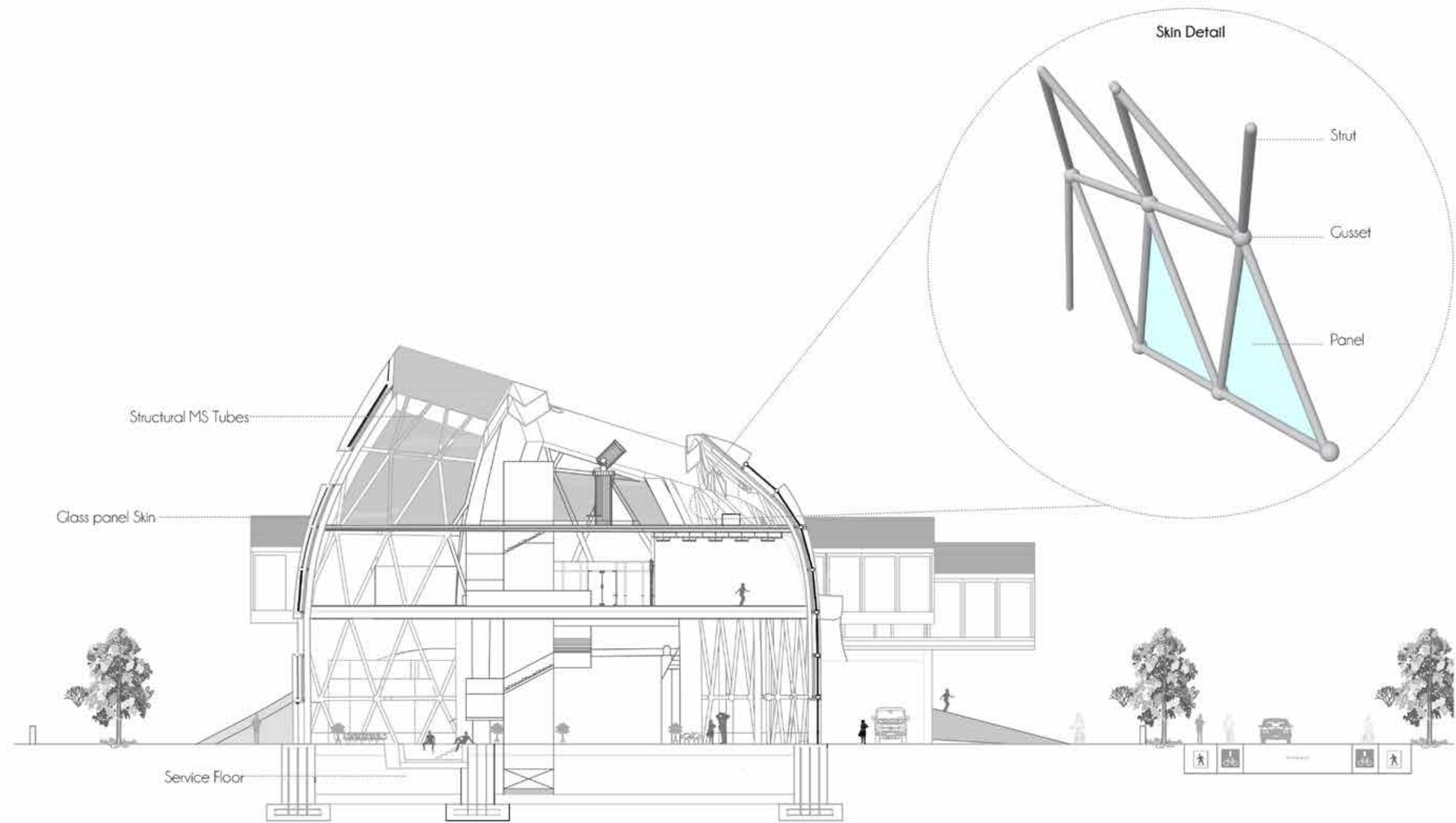


DISCOVERY CENTRE



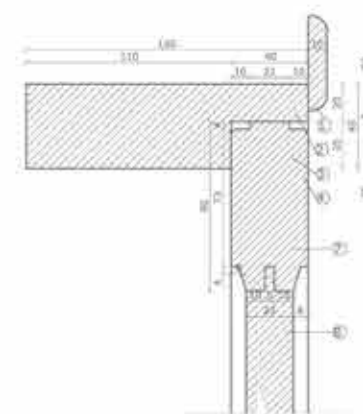
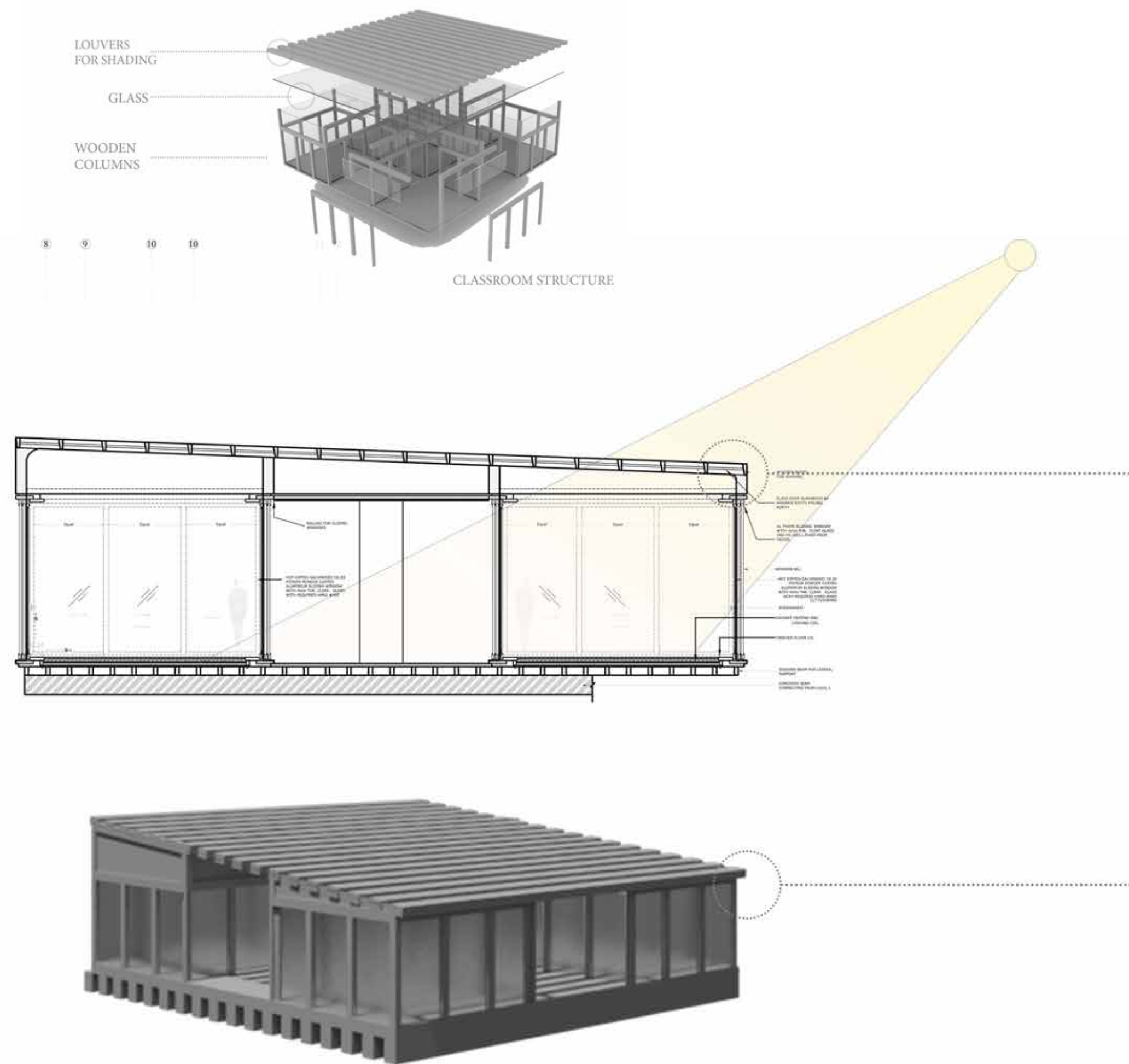


CONSTRUCTION DOCUMENTATION

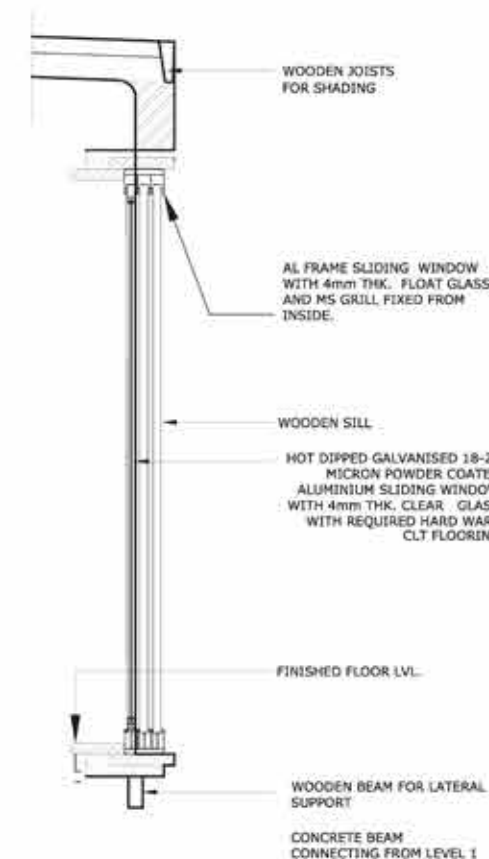




# CONSTRUCTION DOCUMENTATION



Connection Detail



## ELEVATION





# PROJECT 2

## INTRODUCTION

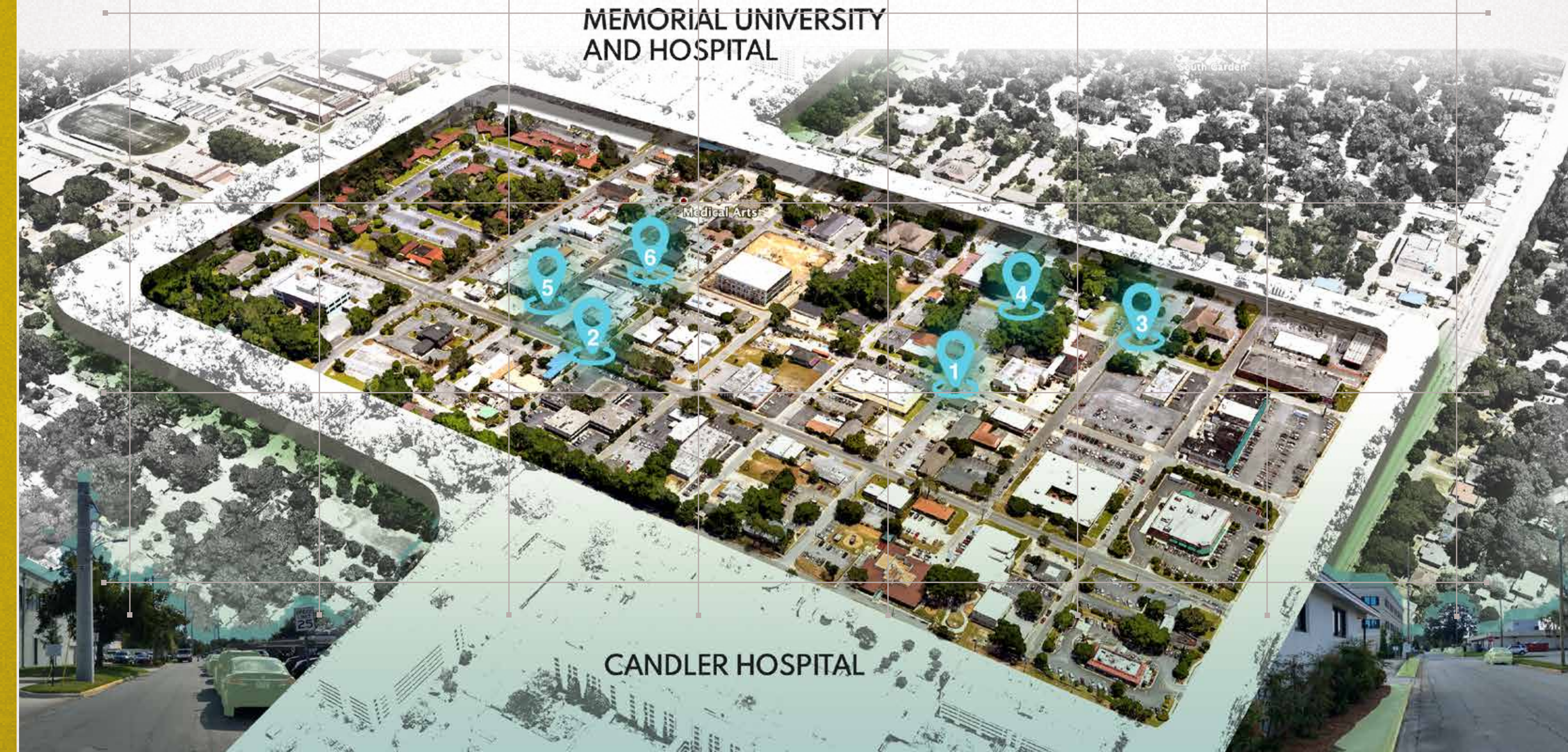
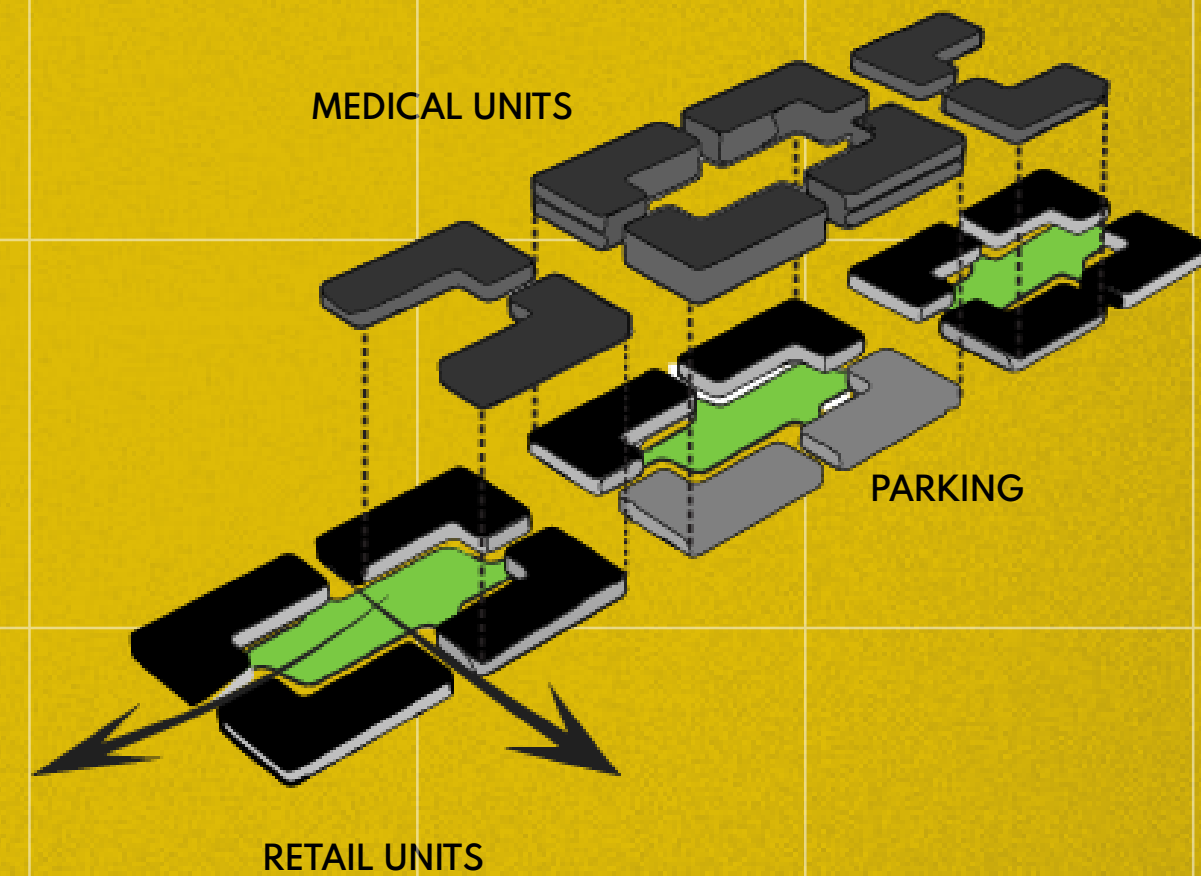
The medical district of savannah is anchored by the two major hospitals, memorial health university, and medical centre and St.Joseph's hospital spread at 118 acres.

## CONCEPT

A medical arts district is a culmination of medical institutions, research centers, individual health units and businesses supporting the whole.

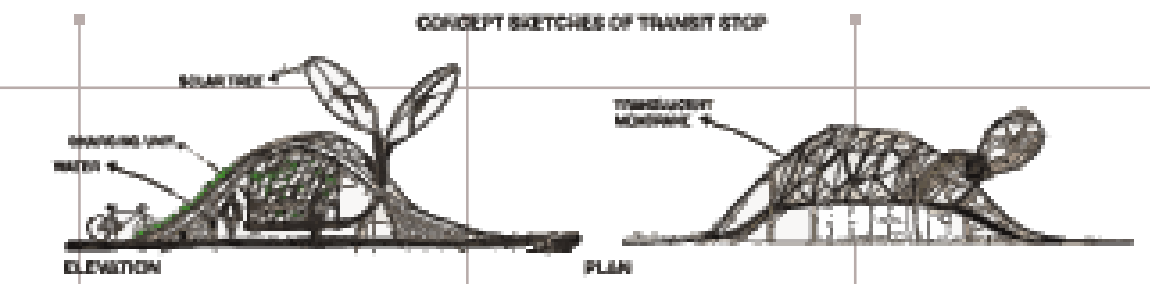
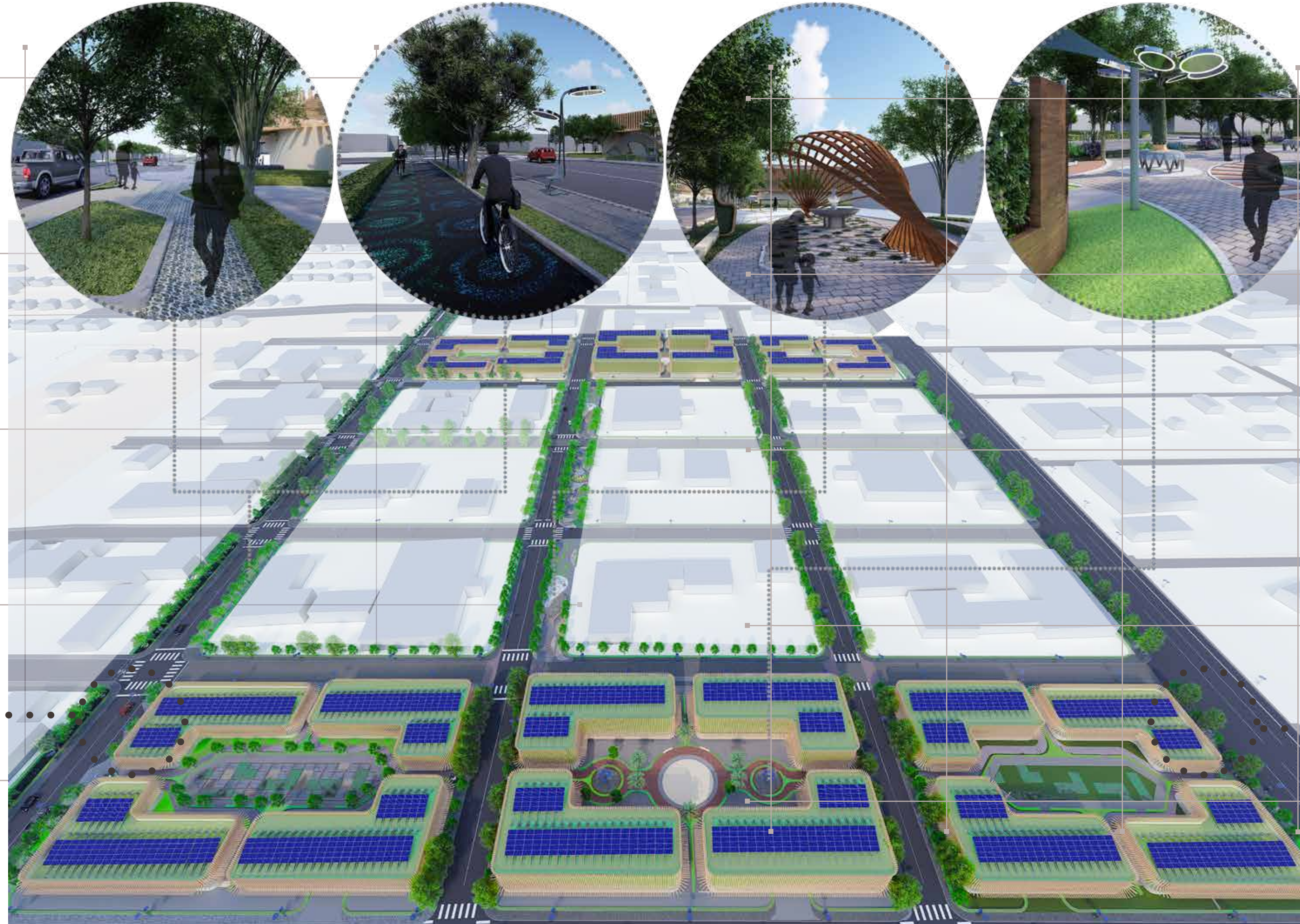
The district is better developed by incorporation of the seven chakras, which transfers energies in the body by receiving, diffusing, transmuting and redistributing them to attain the universally applicable approach.

## URBAN DESIGN: MEDICAL ARTS DISTRICT SAVANNAH, GEORGIA,USA





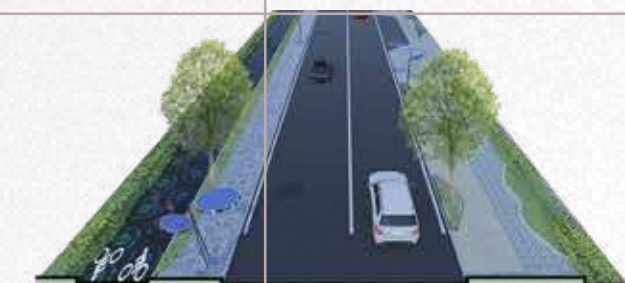
The Paulsen street is designed with a pedestrian walkway with dual material, synthetic pave and a pebbled path which provides a therapeutic experience for the pedestrians. Cycle tracks are made of illuminating radium pebbles and cement. The street acts as a spine connecting the Columbus dr. and Derenne Avenue.



CONCEPTUAL SKETCH OF TRANSIT STOP







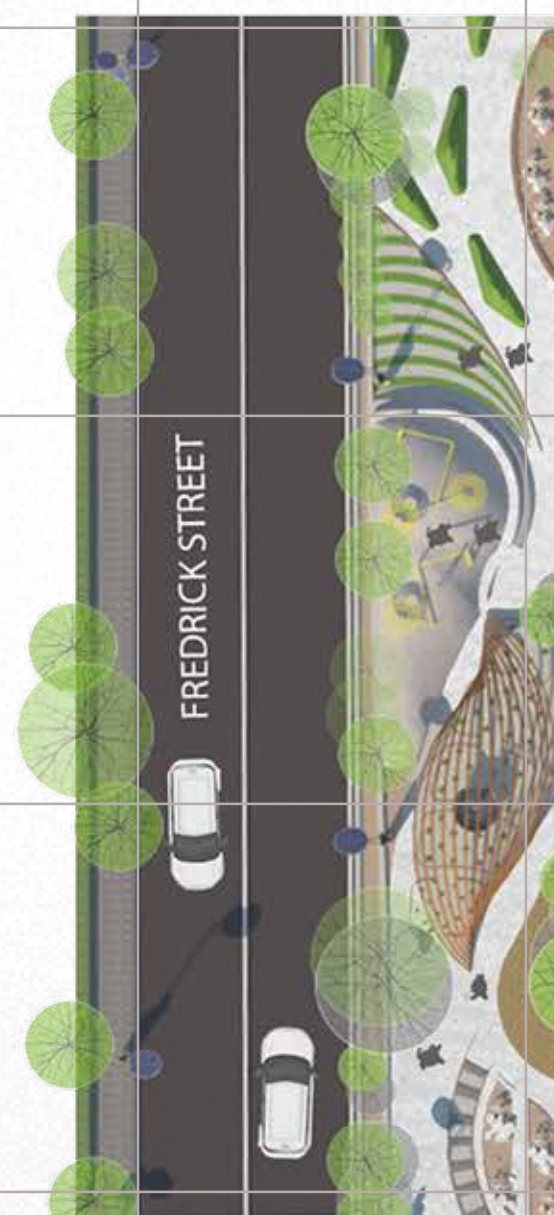
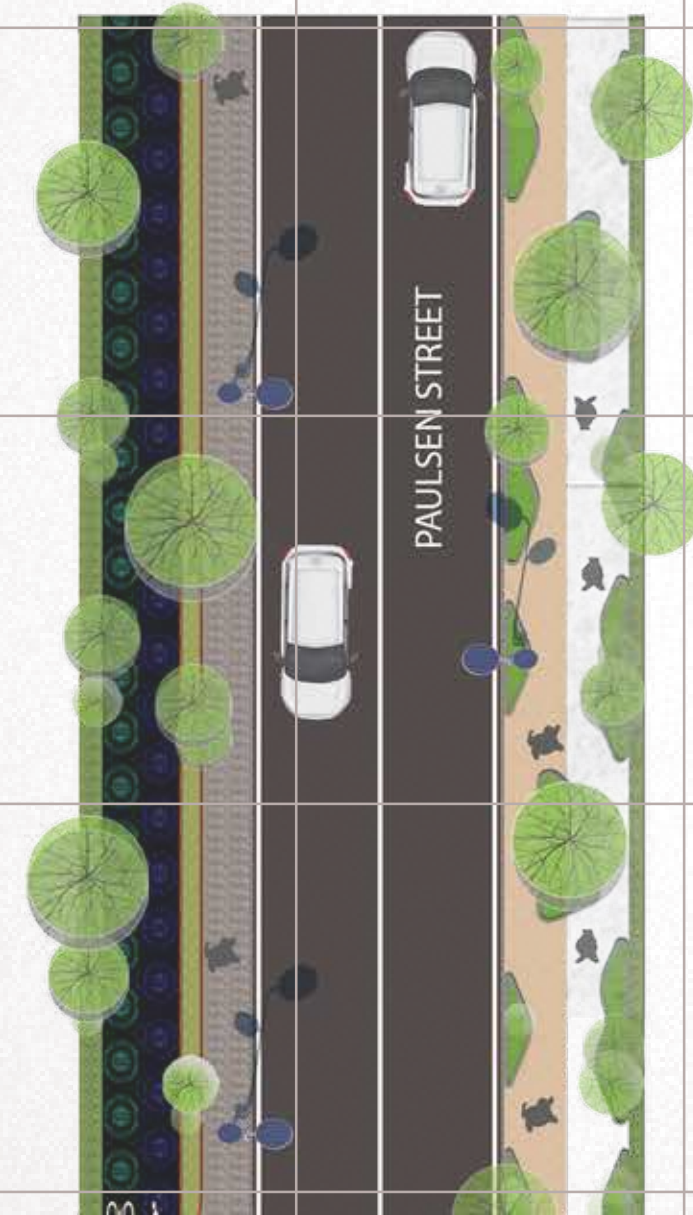
3 PAULSEN STREET



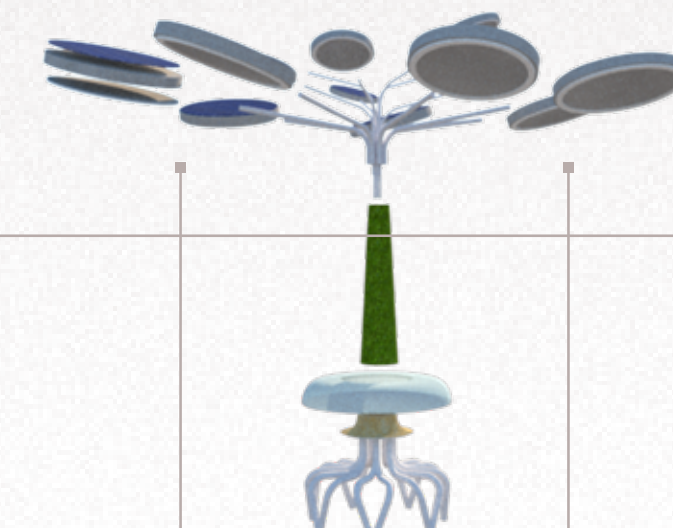
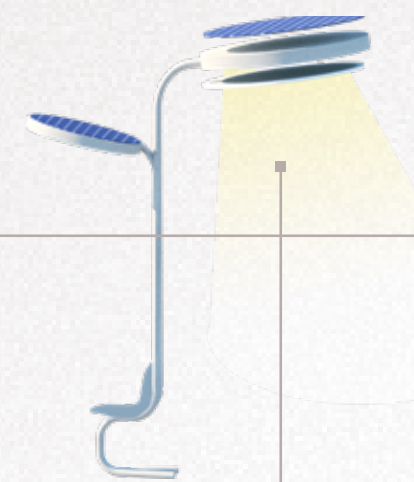
4 FREDRICK STREET



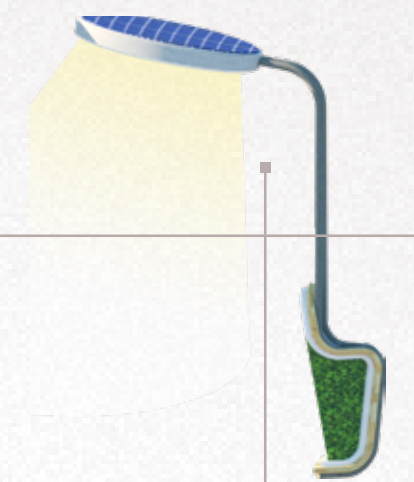
5 FREDRICK STREET



STREET PLANS

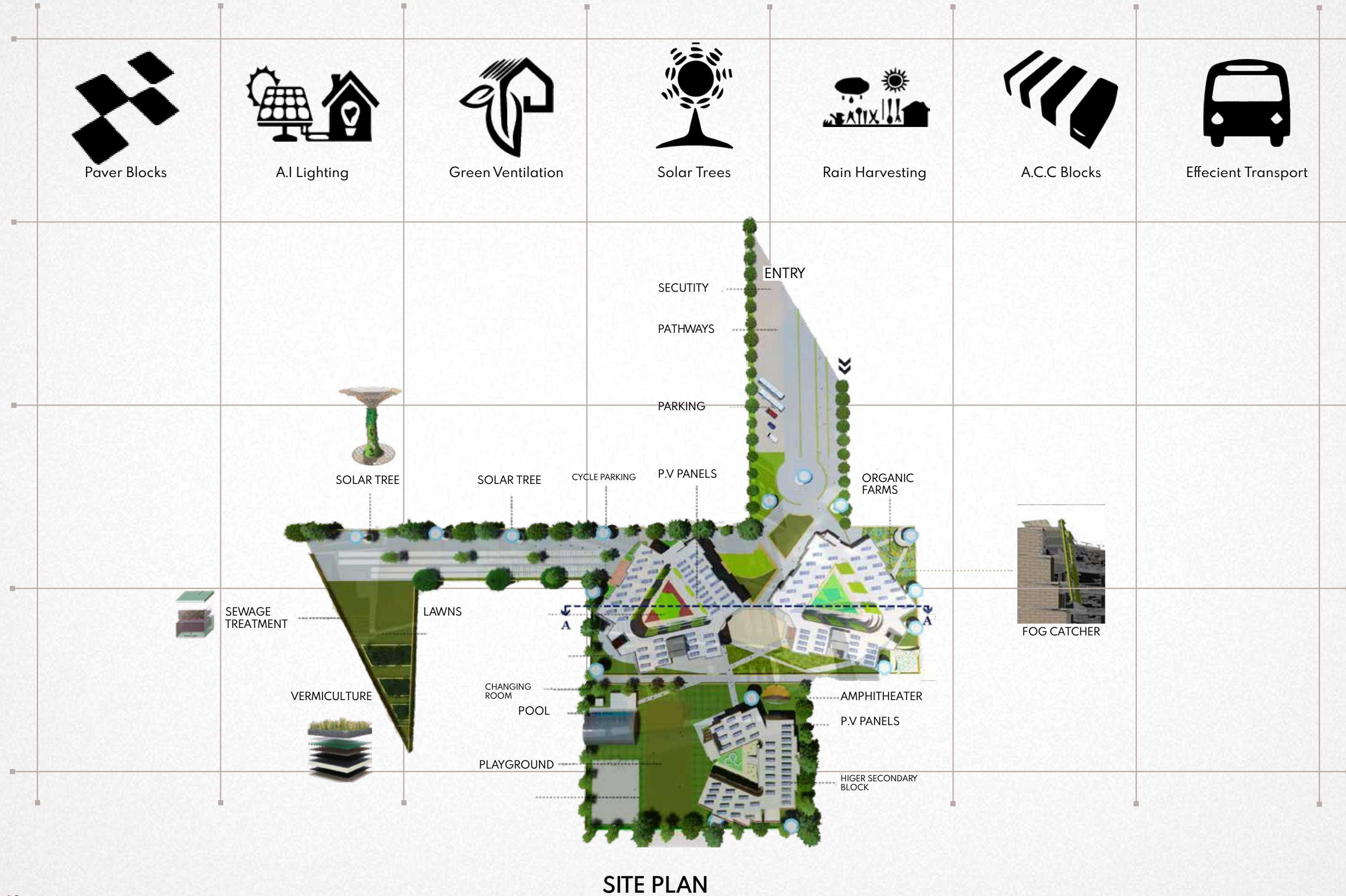


STREET FURNITURE



SOLAR TREE WITH SEATING





## GREEN RATING FOR INTEGRATED HABITAT ASSESSMENT (GRIHA) SUSTAINABLE SCHOOL

# PROJECT 3

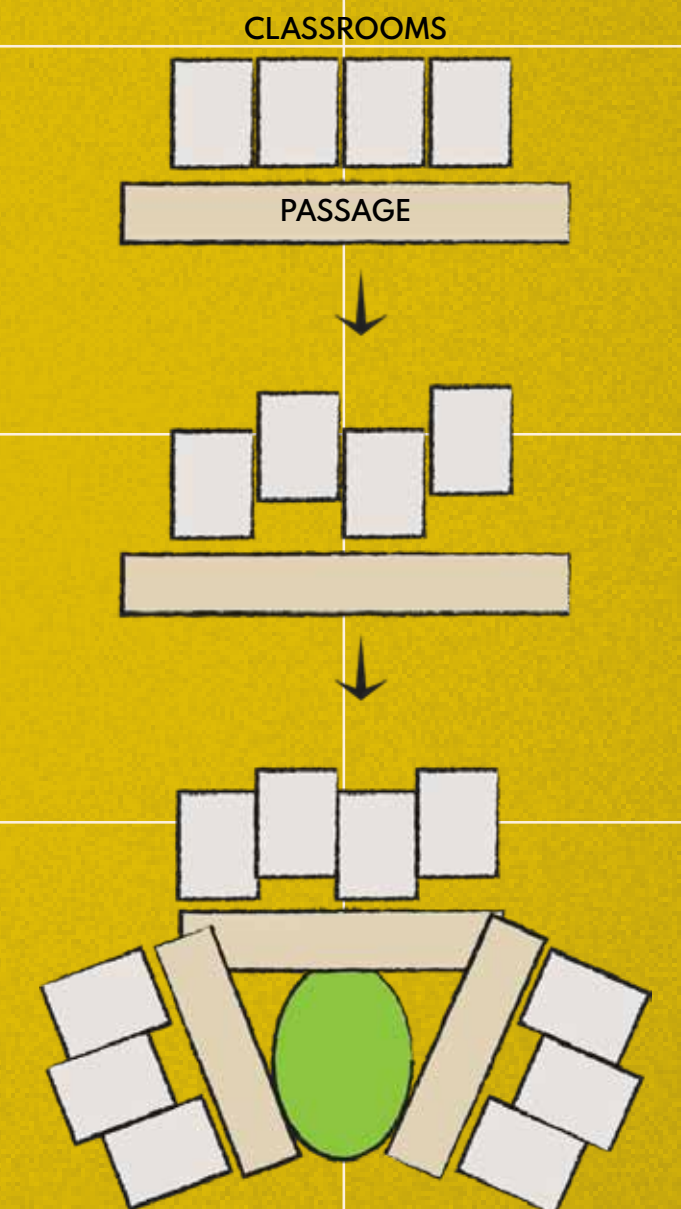
### INTRODUCTION

The primary block's courtyard is provided with lawns of different tones and texture. The secondary block's courtyard has an amphitheatre. The higher secondary's courtyard has a sit-out. Sports amenities include a basketball court, swimming pool and ground is provided.

### CONCEPT

School design must be such that it facilitates the learning of sustainability principles in the students through spatial experience.

The design should make the best use of the site to improve the thermal performance in the climatic conditions of Delhi. The design should give special attention to massing, solar orientation, wind movement, and passive cooling systems.







PRIMARY CLASSROOM - 55 Sq.M



SECONDARY CLASSROOM- 50 Sq.M



HIGHER SECONDARY CLASSROOM - 48 Sq.M



CAFETERIA - 96 Sq.M



COMPUTER LABS - 90 Sq.M



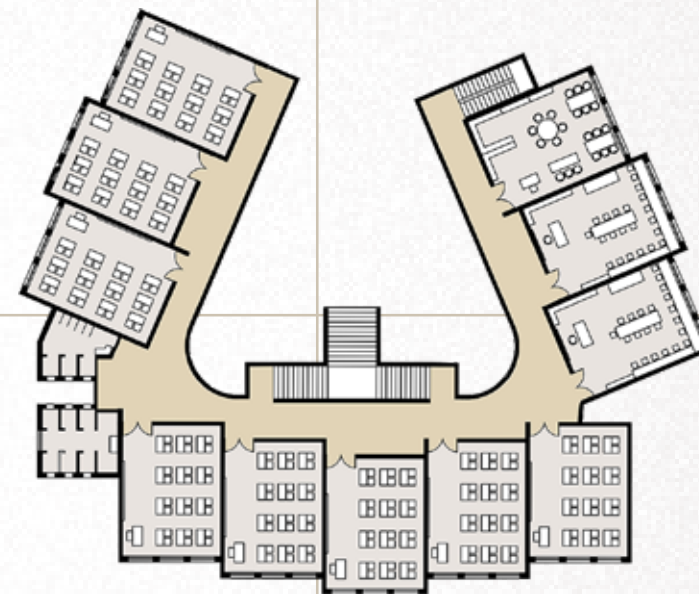
LIBRARY- 110 Sq.M



PRIMARY BLOCK



SECONDARY BLOCK



HIGHER SECONDARY BLOCK



GYM/ SWIMMING POOL

HIGHER SECONDARY BLOCK



SITE VIEW

PRIMARY BLOCK

SECONDARY BLOCK



SITE SECTION



**G-SEN DESIGN (NASA):  
GENDER SENSITIVE DESIGN  
FOR PUBLIC SPACES**

# PROJECT 4

## PLACE MAKING

Proposing the plan for a women-oriented space which offers them shelter and opportunities for earning their livelihood and helps to tackle the issue of women safety.

## HEALING ENVIRONMENT

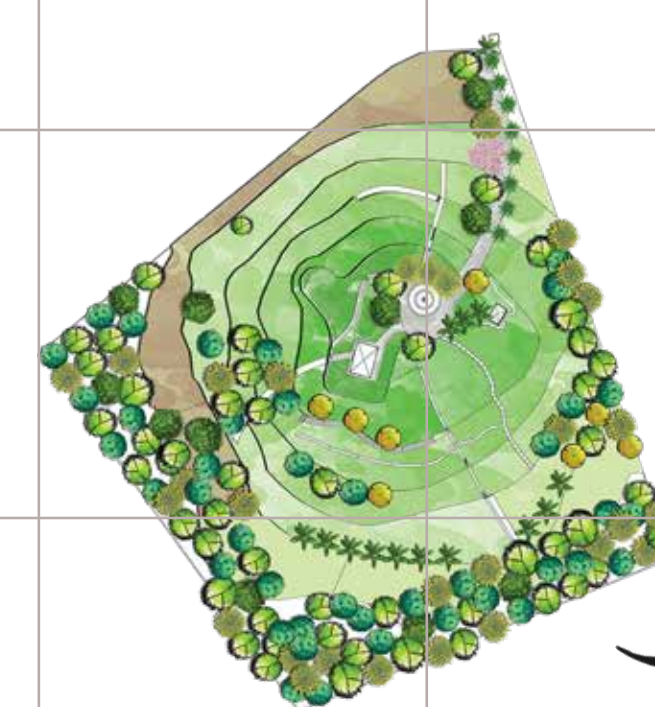
Design for body and mind, soothing the body by physical aspects such as providing gravel pathways which provoke the senses of every human.

## PSYCHOLOGICAL COMFORT

The spiritual center provides helps in transforming the psychological thinking of people thus scattering positive vibes all over the site..

## COMMONS

Commons are elements which can be utilized by every individual of the society without any discrimination of caste, creed , religion or culture.

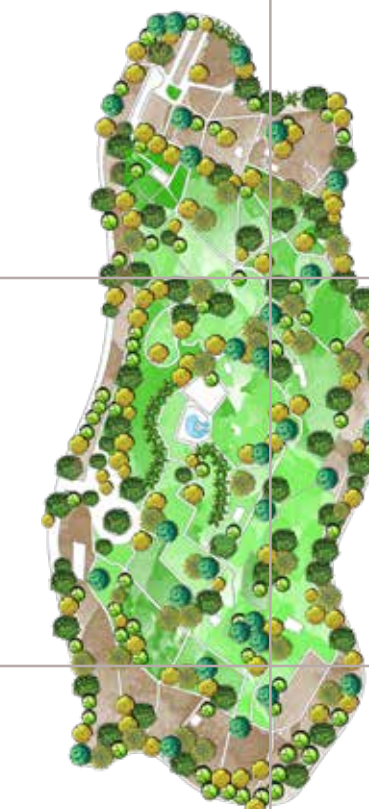


Chota Kashmir , Mumbai

EXISTING SITE PLAN

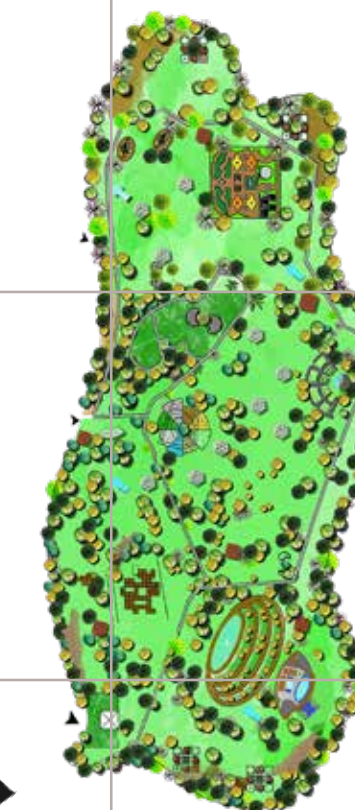


PROPOSED SITE PLAN



Budh Jayanti Park , Delhi

EXISTING SITE PLAN



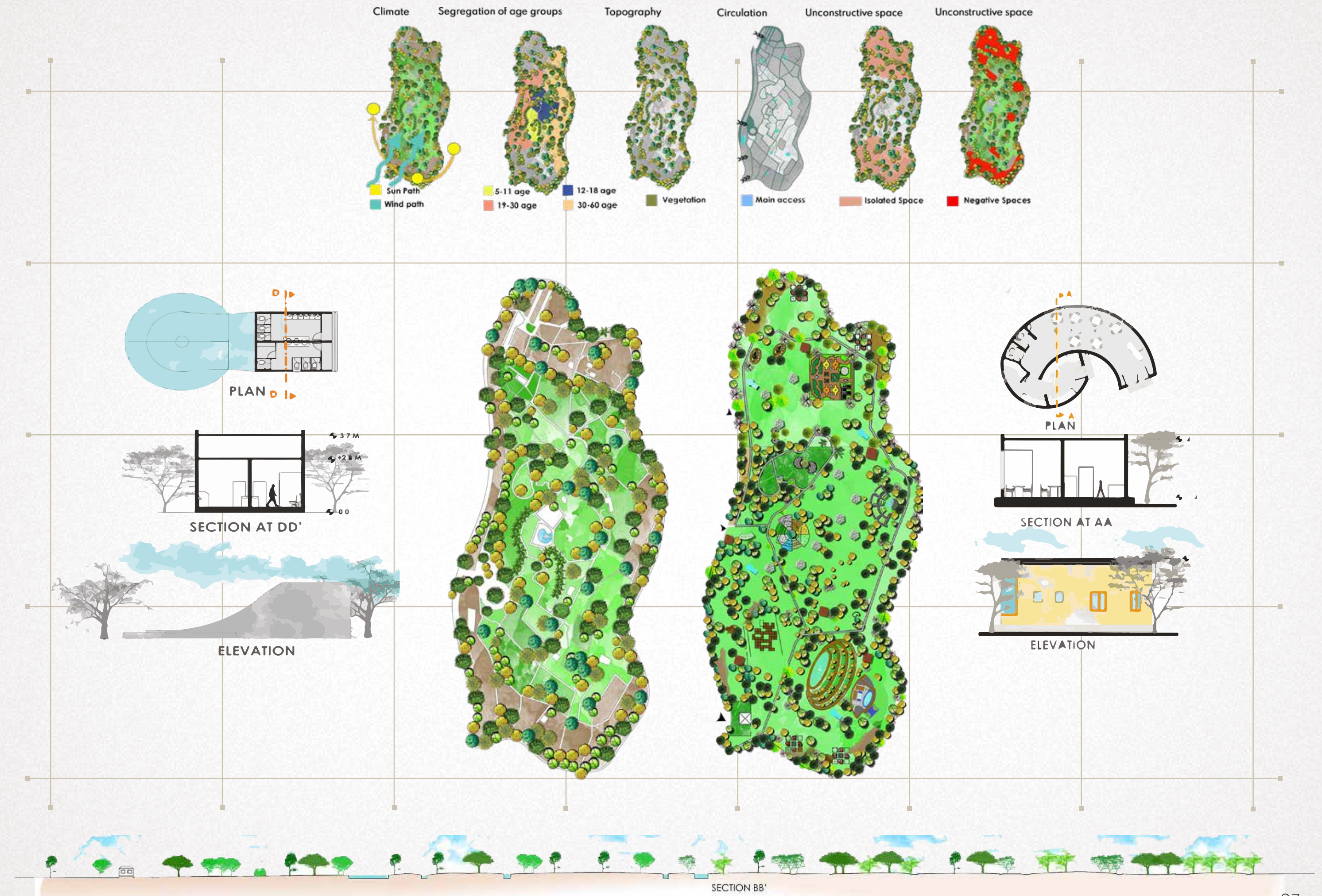
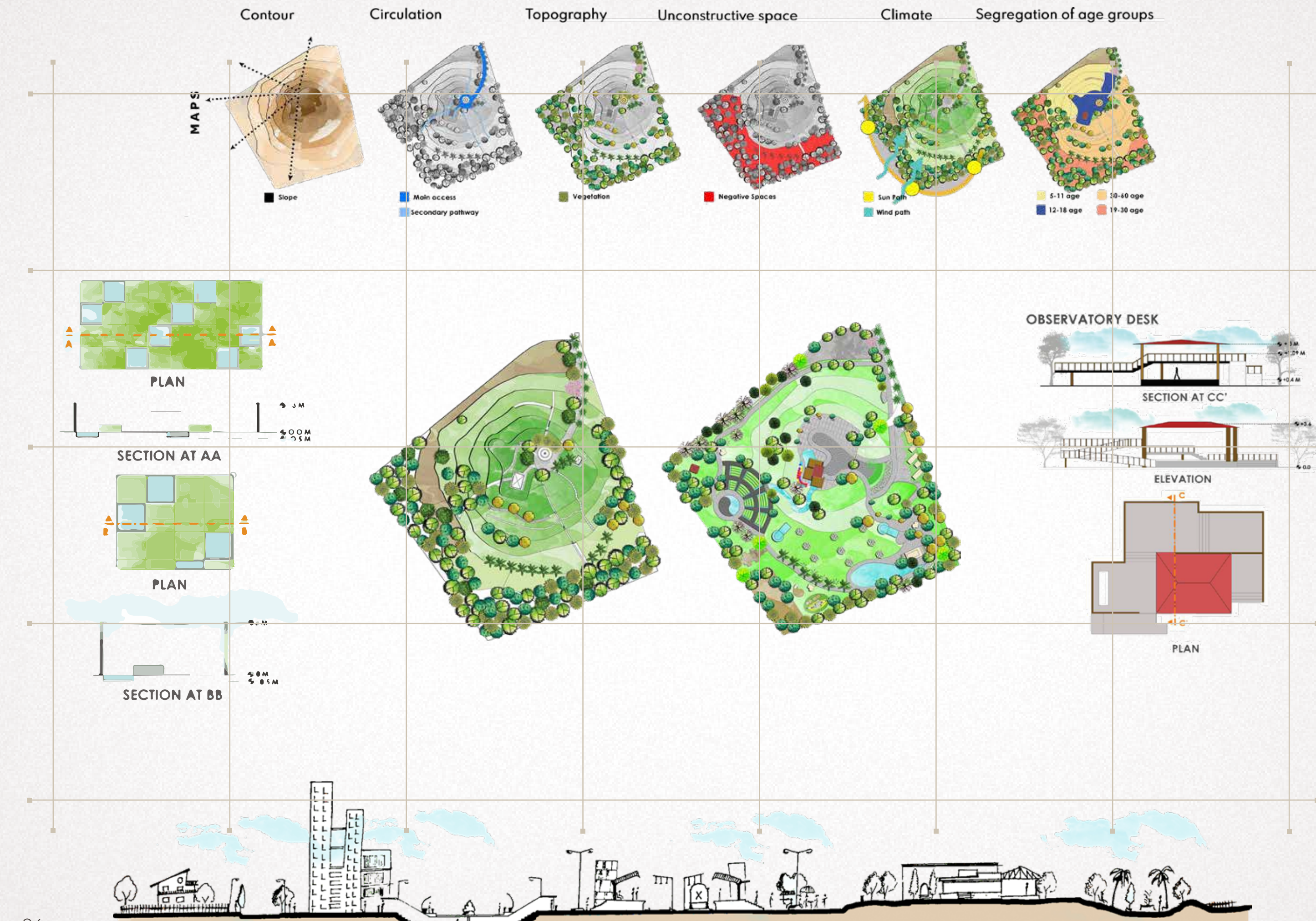
PROPOSED SITE PLAN



## ACTIVITY MAPPING







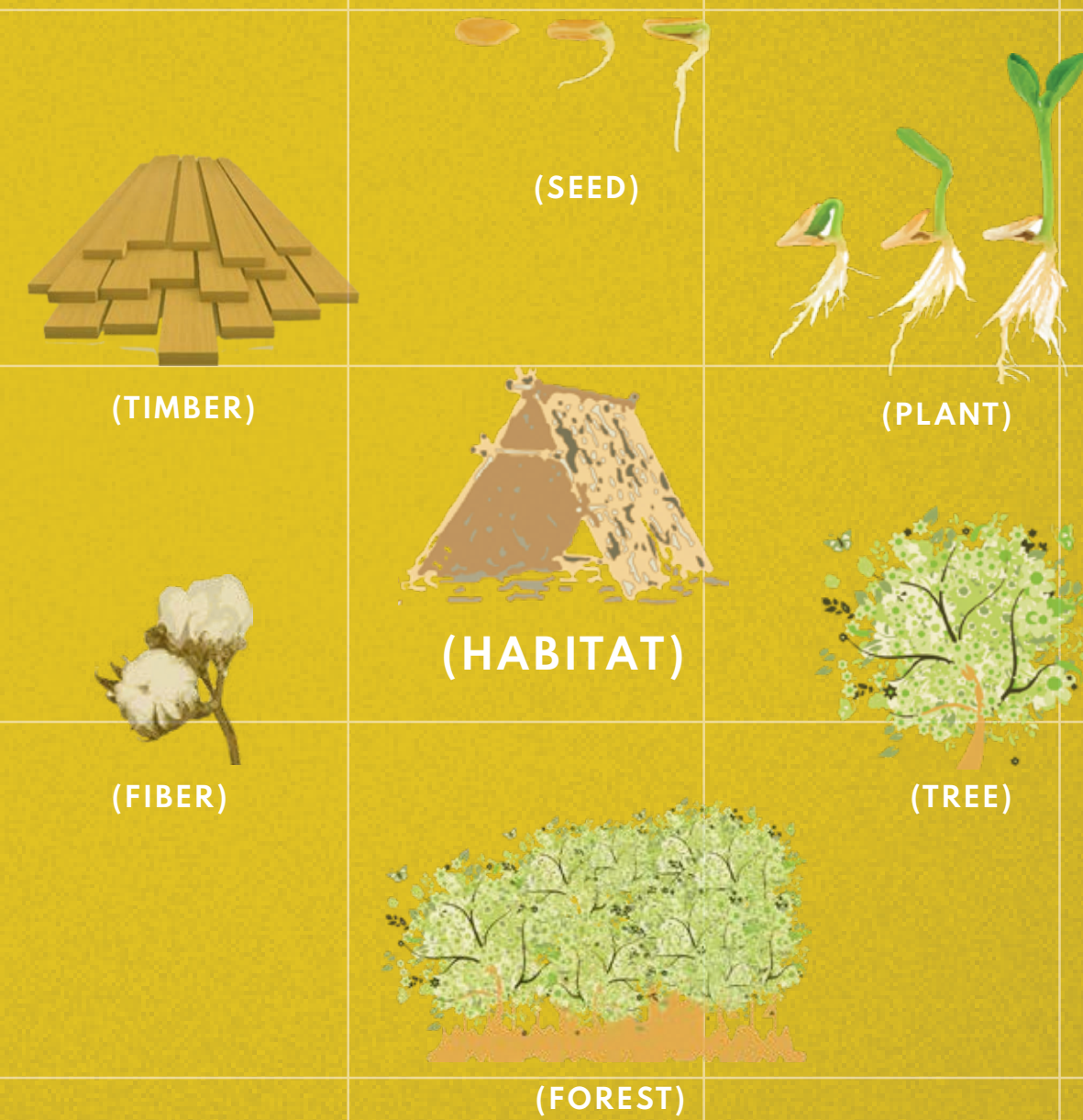


## BEE BREEDERS COMPETITION - PAVILION OF HUMANKIND

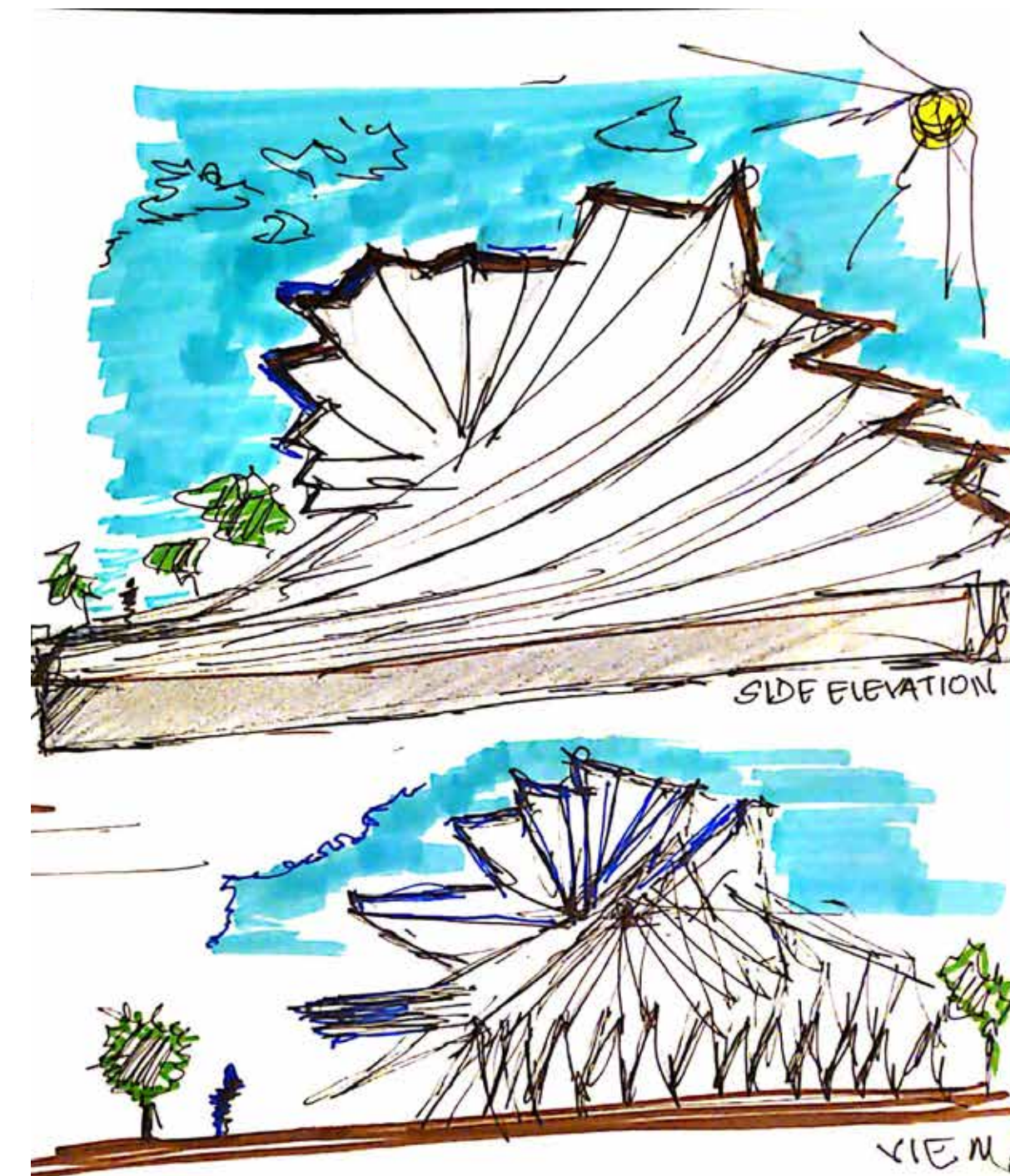
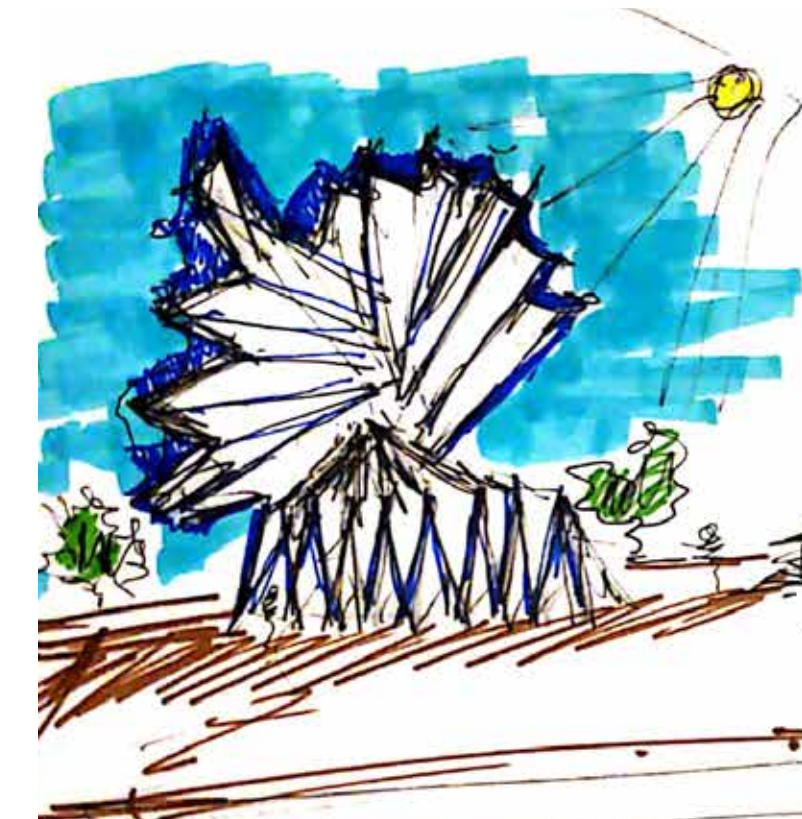
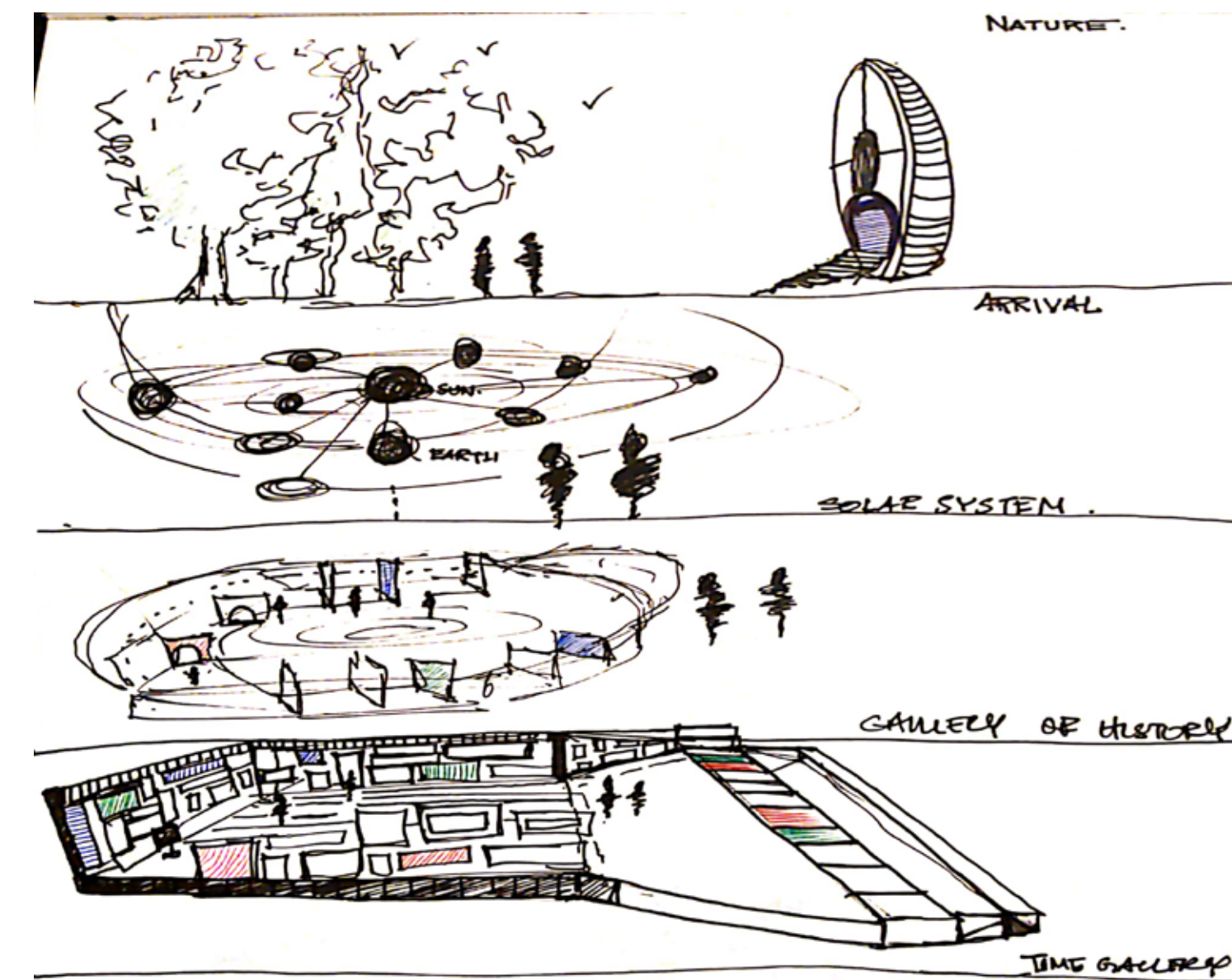
The human evolution has been a long process of learning from nature. The first caves shelters have turned into the skyscrapers of today, each being a remarkable feat, during its time. Throughout the ages, light has shaped how we build our forms. As we learned to modify the elements around us, each discovery pushed further the wheel of human evolution. If all this learning was to be communicated to an entity, the true wonders of the human struggle would be personified in the learnings of humankind.

The evolution of a shelter from the first huts in the Paleolithic Period influenced the idea of design, marrying them with the modern sensibilities. The use of skill like weaving creates an organic idea of a structure that is a living symbolism of human evolution.

# PROJECT 5



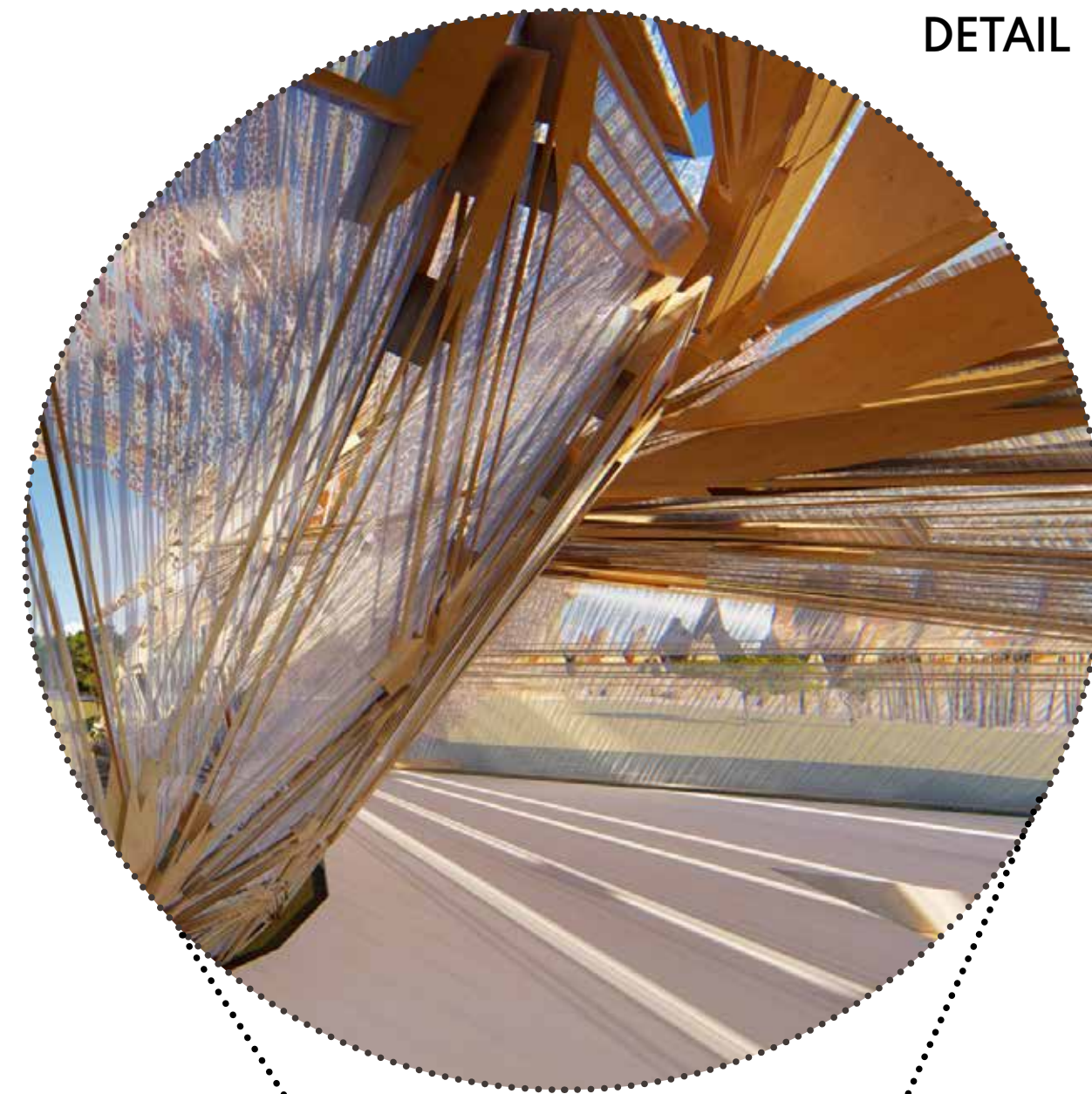
PROCESS DIAGRAM



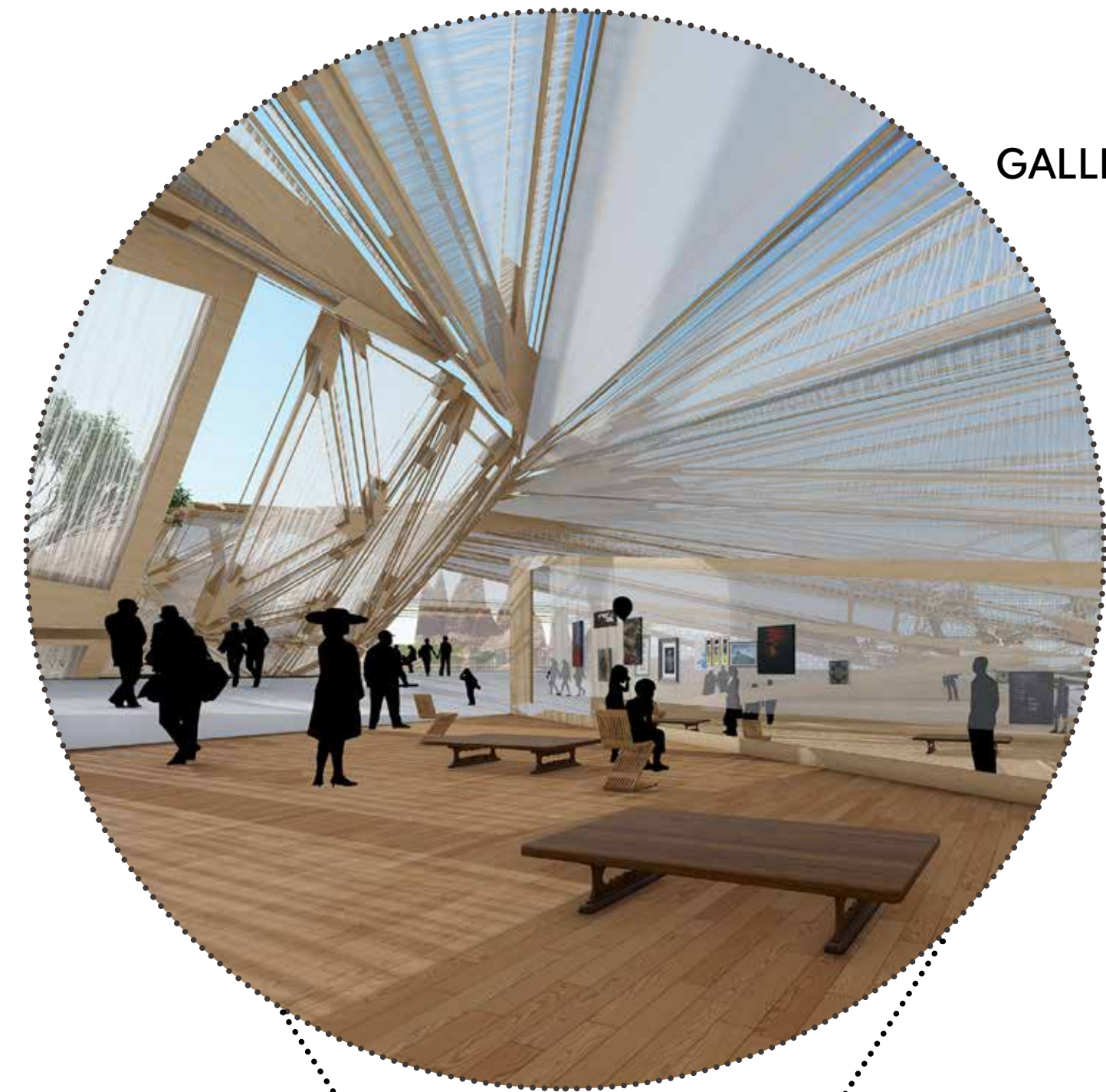




CONCEPTUAL COLLAGE



DETAIL



GALLERY SPACE



SECTIONAL VIEW



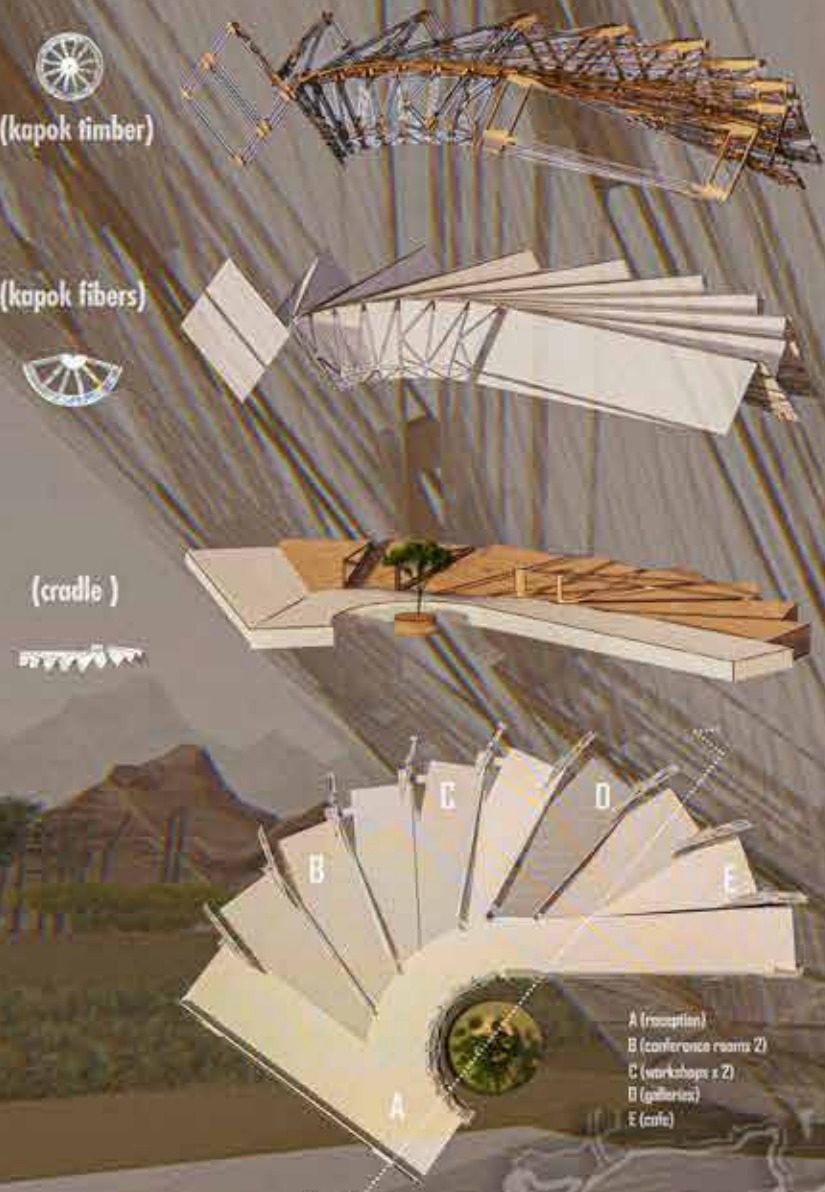
# Cradle of Humankind

Mengwang, South Africa

The human evolution has been a long process of learning from nature. The first caves shelters have turned into the skyscrapers of today, each being a remarkable feat, during its time. Throughout the ages, light has shaped how we build our forms. As we learned to modify the elements around us, each discovery pushed further the wheel of human evolution. If all this learning was to be communicated to an entity, the true wonders of the human struggle would be personified in the learnings of humankind.

Weaving is acknowledged as one of the oldest surviving crafts in the world. The tradition of weaving traces back to Mesolithic times approximately 12,000 years ago. Even before the actual process of weaving was discovered, the basic principle of weaving was applied to interlace branches and twigs to create fences, shelters and baskets for protection.

The evolution of a shelter from the first huts in the Paleolithic Period influenced the idea of design, marrying them with the modern sensibilities. The use of skill like weaving creates an organic idea of a structure that is a living symbolism of human evolution.

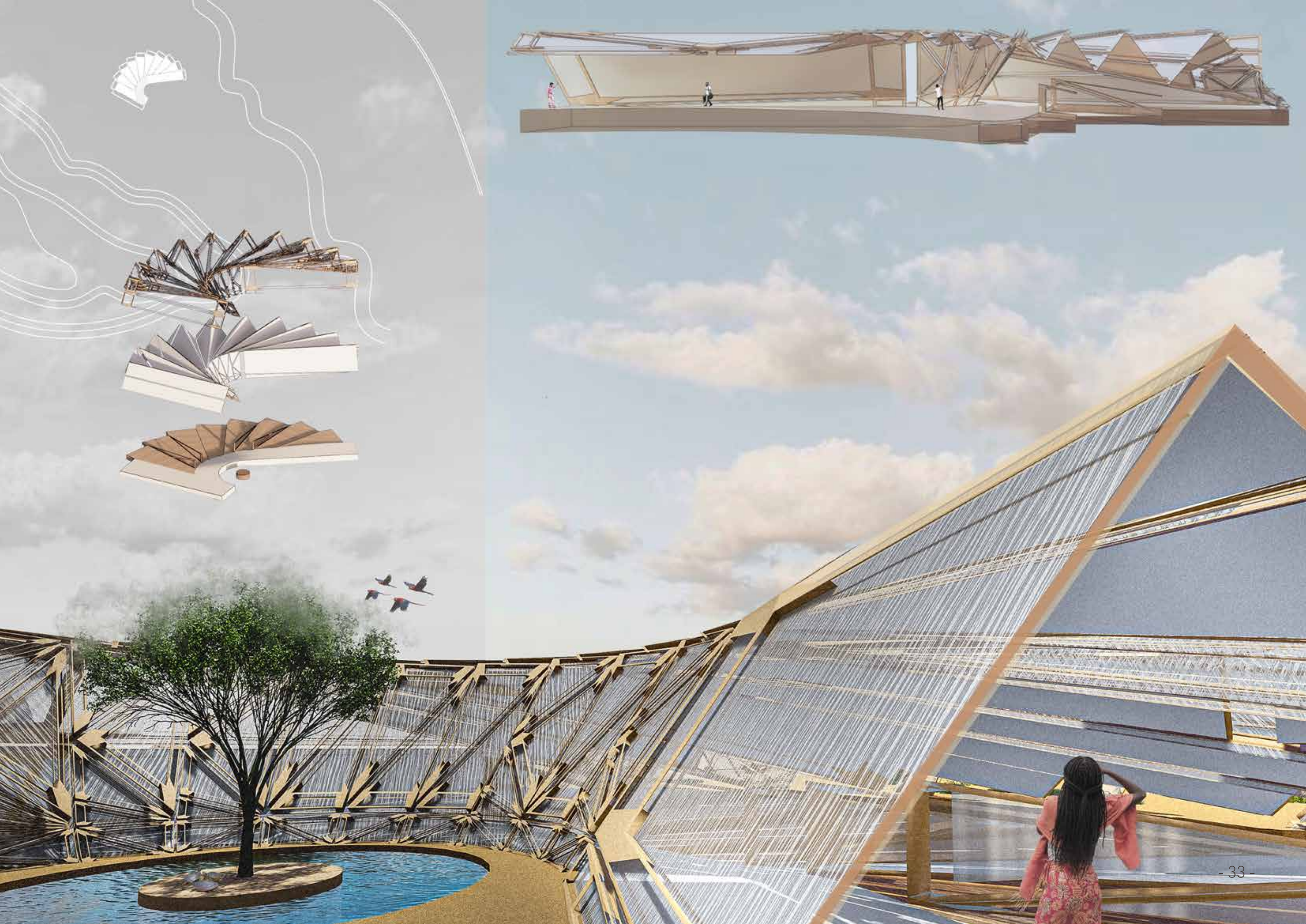


Located in the North west region of South Africa, Cradle of Humankind is a UNESCO world heritage site, located by Harbeeshoek Earth Station. One of the oldest human fossils were found in this very palace. This pavilion represents the greatest achievement of humanity by resonating the importance of nature and light, to design symphonies encapsulating time in a space.

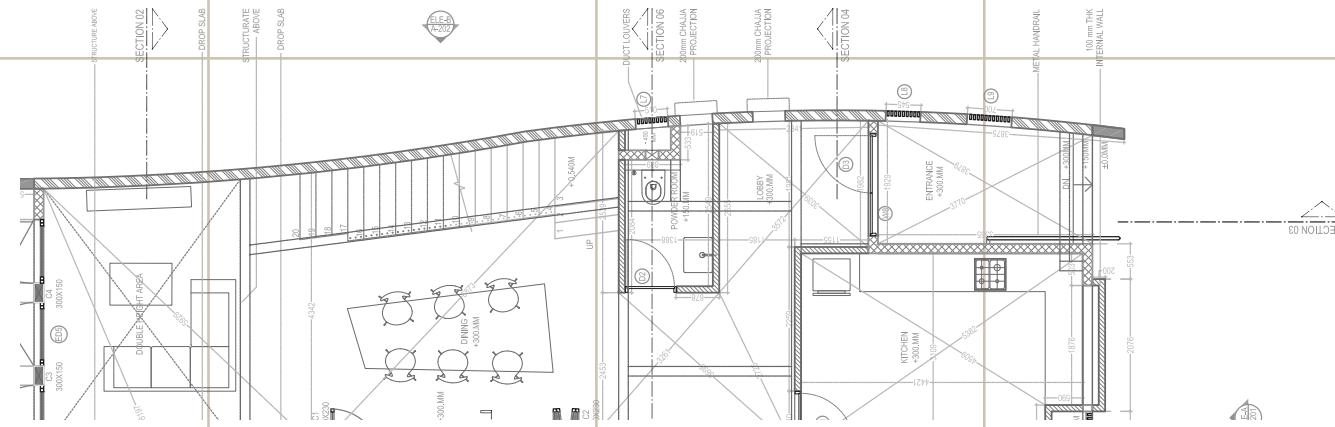
The structure of the pavilion is design using vernacular techniques of construction with combined aesthetics of modern contemporary design solutions. The framework is formed using a wooden framework with Kapok fibers weaving the floor plan to create the spaces of humanity.

*If a small and tenuous population of protohumans had not survived a hundred slings and arrows of outrageous fortune (and potential extinction) on the savannas of Africa, then Homo sapiens would never have emerged to spread throughout the globe.*

- Stephen Jay Gould







Architectural floor plan of the first floor, showing various rooms and their dimensions. The plan includes a central living area with a large window (ED2) and a door (D1). To the left are Guest Bedroom 03 and Guest Bathroom 3. To the right are Guest Bedroom 01, Guest Bathroom 01, Guest Bathroom 02, and a Utility Room. A Terrace and Servants Yard are located on the far right. The plan is annotated with dimensions, room numbers, and material specifications. Key features include a 150mm THK WALL, 100mm THK WALL, and 150mm THK WALL. The plan also shows a PLINTH PROTECTION PLINTH LEVEL +0.300M and GROUND LEVEL ±0.000M. The plan is labeled with 'FIRST FLOOR LEVEL' and 'GROUND LEVEL'.